

**Series 400
6466
Diesel Engines**

**Deere Power Systems Group
CTM1 (27OCT94)**

LITHO IN U.S.A.
ENGLISH

**Series 400
6466 Diesel Engines**

CTM1 (27OCT94)



Introduction

FOREWORD

This manual is written for an experienced technician. Essential tools required in performing certain service work are identified in this manual and are recommended for use.

Live with safety: Read the safety messages in the introduction of this manual and the cautions presented throughout the text of the manual.



This is the safety-alert symbol. When you see this symbol on the machine or in this manual, be alert to the potential for personal injury.

Use this component technical manual in conjunction with the machine technical manual. An application listing in the introduction identifies product-model/component type-model relationship. See the machine technical manual for information on component removal and installation, and gaining access to the components.

This manual is divided in two parts: repair and operation and tests. Repair sections contain

necessary instructions to repair the component. Operation and tests sections help you identify the majority of routine failures quickly.

Information is organized in groups for the various components requiring service instruction. At the beginning of each group are summary listings of all applicable essential tools, service equipment and tools, other materials needed to do the job, service parts kits, specifications, wear tolerances, and torque values.

Component Technical Manuals are concise service guides for specific components. Component technical manuals are written as stand-alone manuals covering multiple machine applications.

Fundamental service information is available from other sources covering basic theory of operation, fundamentals of troubleshooting, general maintenance, and basic type of failures and their causes.

Dealer Presentation Sheet

JOHN DEERE DEALERS

IMPORTANT: The changes listed below make your current CTM1 obsolete. Discard CTM-1, dated (2-87) on the front cover. Please copy this page and route through your service department.

- This CTM has been completely revised. Detailed descriptions of the improvements are too numerous to list.
- All safety information has been updated in Group 00. All persons using this manual should read and understand this information.
- Essential and Special Tools listings have been revised and updated throughout the manual.

- Basic engine specifications have been deleted from Group 01. Specifications are covered in detail in their respective groups. All specifications lists have been revised and updated.

- Information on recommended sealants, thread lock compounds, anti-seize compounds, gasket materials and adhesives has been updated. Generic material recommendations have been revised to provide more specific information. Group 04 also contains Sealant Applications Guidelines that provide ordering information for these materials as well as helpful "where used" information.

- Most component identification illustrations and general system descriptions have been moved to Group 105, Engine System Operation and Tests.

- Dealer Fabricated Tools have been removed from the individual groups and consolidated in Group 199.

ABOUT THIS MANUAL

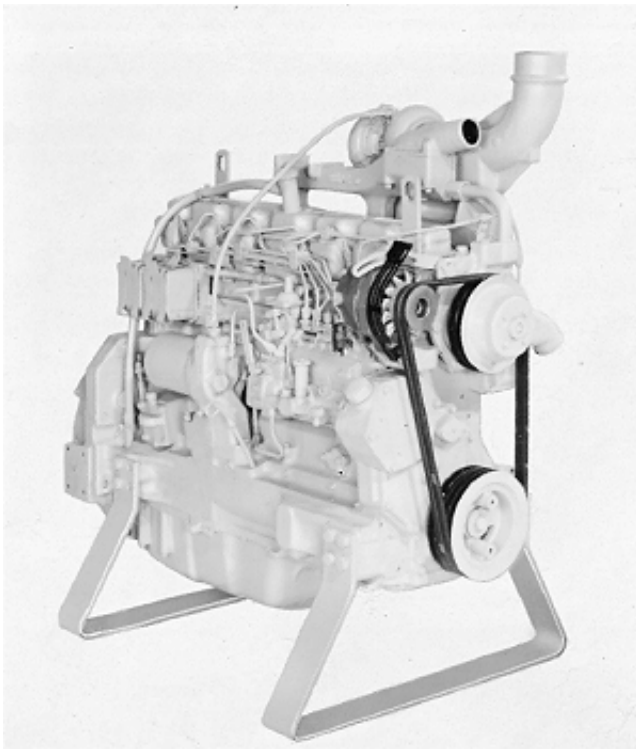
This component technical manual covers the recommended repair procedure for 6466 diesel engines produced in Waterloo, Iowa.

Before beginning repair of an engine, clean engine and mount on a repair stand. (See Group 03 - Engine Mounting.)

Direction of engine crankshaft rotation in this manual is referenced as counterclockwise, facing the flywheel looking toward the front (fan drive end).

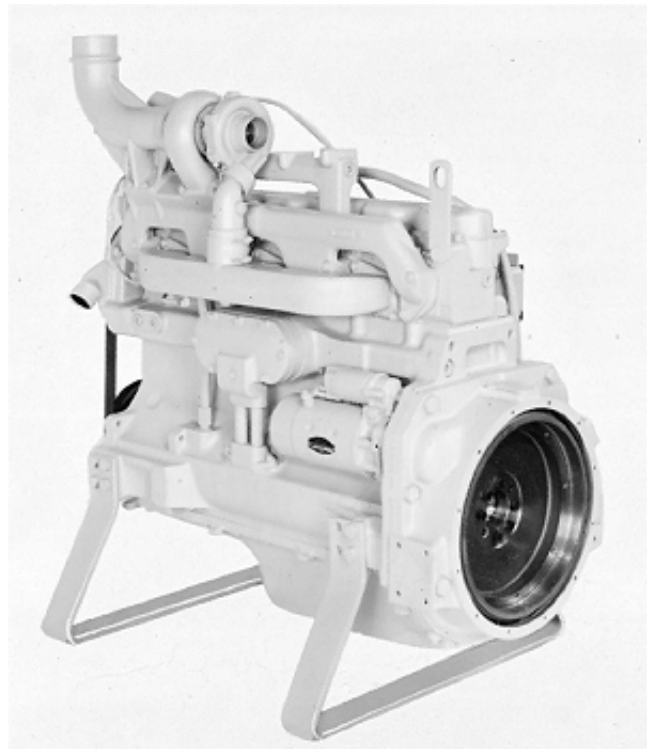
Some components of this engine may be serviced without removing the engine from the machine. Refer to the specific machine technical manuals for information on components that can be serviced without removing the engine from the machine and for engine removal and installation procedures.

Read each module completely before performing any service.



3/4 Right Front View 6466T Engine

RG4704
-UN-26JAN90



3/4 Left Rear View of 6466T Engine

RG4705
-UN-26JAN90

S11,2000,EL -19-08MAR94

It's a preview. You can download the full file by clicking the link below.

<https://shopservicemanual.com/>

Service Manuals from 2\$