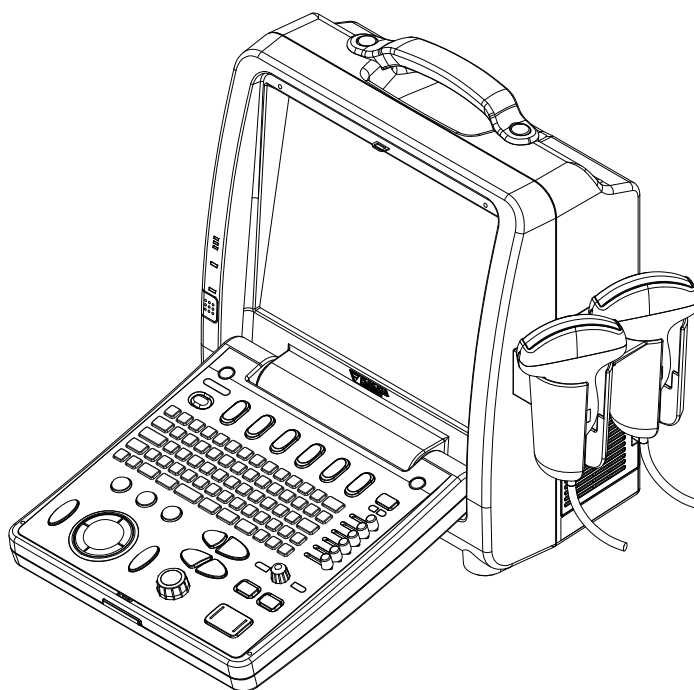


DIAGNOSTIC ULTRASOUND
IMAGING EQUIPMENT

Bettius

UF-450AX

SERVICE MANUAL



- This service manual is intended for use by authorized Fukuda Denshi service personnel. Assembly and adjustment shall not be done by other than authorized service personnel.
- After reading, keep this manual for future use.

Service Manual Delivery Notice

Service Manual (No. _____): Q'ty 1

Please confirm your receipt of the above service manual by filling in and sending us back this sheet by return.

Delivery of Service Manual

Please note that this service manual is a confidential document and needs to be kept with an utmost care under person in charge. If the technical drawing in the service manual is unreadable, you can request it to us by specifying a page or a part.

When you have received this service manual, verify that there is no paging disorder or missing page. You are requested to kindly fill the underlined area below in this sheet and send it back to us after verification. Please be noted that photocopying of this manual is strictly prohibited.

Also, for improvement of the future service manual, your comment and request will be appreciated. If you have any comment or request on usability, viewability, readability, or if you notice anything hard to understand on this service manual, please inform it to us.

Development & Production Support Dept.
Fukuda Denshi Co., Ltd.
2-35-8 Hongo Bunkyo-ku, Tokyo
113-8420 Japan

Received by _____

of (Company/Hospital) _____

on the day of _____

Change tracking

Version	Changes	Reasons
1	–	–
2	<p>4. Disassembly and Assembly Procedure Add descriptions about screw specification</p> <p>7.1 Troubleshooting Table Add description of corrective measure in A-16 Add B-5</p> <p>A1. Upgrading Software Add date/time setting of BIOS in initial installation</p> <p>A4. Cleaning and Replacing the Trackball Add descriptions about screw specification</p> <p>A5. Replacing the Backup Battery Add descriptions about screw specification Add resetting date/time of BIOS</p>	<p>To clarify the screw specification</p> <p>To deal with blinking of 'STAND BY' LED To deal with blinking of 'STAND BY' LED</p> <p>To be required for operation of the installer</p> <p>To clarify the screw specification</p> <p>To clarify the screw specification To be required for startup of the system</p>

It's a preview. You can download the full file by clicking the link below.

<https://shopservicemanual.com/>

Service Manuals from 2\$