



Service Manual

4DX

Backhoe Loader

Published by

Product Support Department,
JCB India Limited
23/7, Mathura Road,
Ballabgarh – 121004
INDIA

Tel: 0091 129 4299251
Fax 0091 129 2309051

Part No: 550/42914

General Information 1

Care & Safety 2

Routine Maintenance 3

Attachments A

Body & Framework B

Electrics C

Controls D

Hydraulics E

Transmission F

Brakes G

Steering H

Engine K

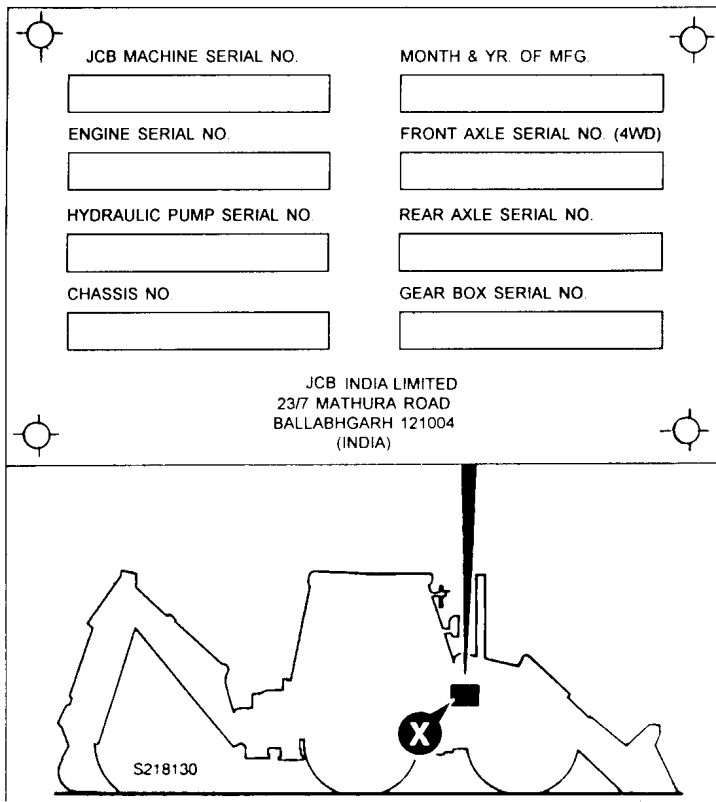
Contents	Page No.
Machine Identification Plate	1 - 1
Engine Identification Number	1 - 2
Serial Plates	1 - 2
Torque Settings	2 - 1
Service Tools	
- Body & Framework	3 - 1
- Hydraulics	3 - 3
- Transmission	3 - 4

Machine Identification Plate

Your machine has an identification plate **X** mounted on the loader tower as shown. The serial numbers of the machine and its major units are stamped on the plate.

The serial number of each major unit is also stamped on the unit itself. If a major unit is replaced by a new one, the serial number on the identification plate will be wrong. Either stamp the new number of the unit on the identification plate, or simply stamp out the old number. This will prevent the wrong number being quoted when replacement parts are ordered.

The machine and engine serial numbers can help identify exactly the type of equipment you have.

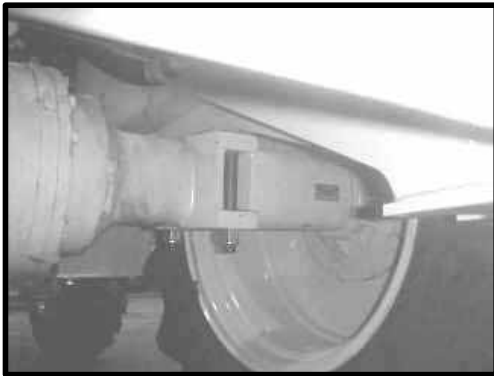


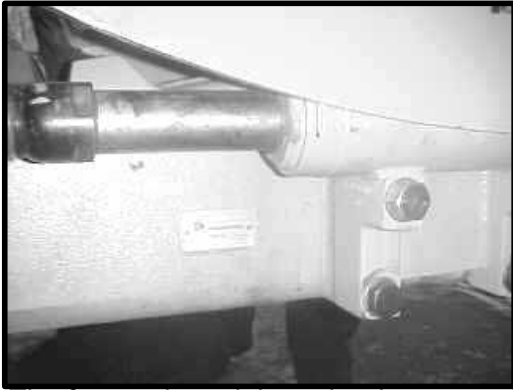
Engine Serial Plate

The engine serial number is stamped on a label which is fastened to the left side of the cylinder block (looking from the rear).

**Rear Axle Serial Plate**

The rear axle serial number is stamped on a plate mounted to the front face of the axle, as shown.

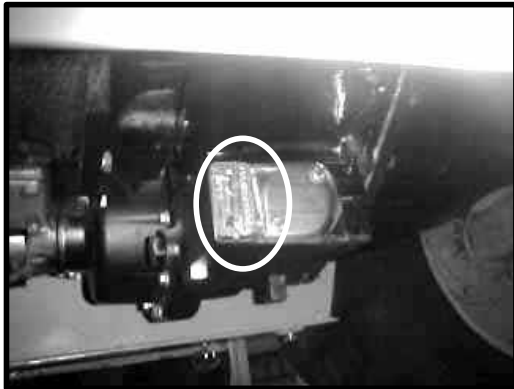


Front Axle Serial Plate

The front axle serial number is stamped on a plate mounted on the axle.

Syncro Shuttle Serial Plate

The Syncro Shuttle serial number is stamped on a label which is mounted adjacent to the Suction strainer.



It's a preview. You can download the full file by clicking the link below.

<https://shopservicemanual.com/>

Service Manuals from 2\$