

## Section i - Introduction

### Section Contents

<b>About the Manual</b> .....	i-1
<b>General Cleaning Instructions</b> .....	i-5
Solvent and Acid Cleaning .....	i-5
Steam Cleaning .....	i-5
<b>General Safety Instructions</b> .....	i-3
Important Safety Notice .....	i-3
General Repair Instructions .....	i-4
<b>How to Use the Manual</b> .....	i-1
<b>Illustrations</b> .....	i-2

Reprinted

**THIS PAGE INTENTIONALLY LEFT BLANK.**

## About the Manual

This Case 5.9 Liter Engine Troubleshooting and Repair Manual is intended to aid in determining the cause of engine-related performance issues and to provide recommended repair procedures. The material in this manual covers Case 5.9 Liter Engines. The manual is divided into sections. Some sections contain reference numbers and procedure numbers. The reference numbers provide general information, specifications, diagrams, and service tools, where applicable. The procedure numbers describe specific repair procedures and are referred to in the Troubleshooting Logic Charts.

## How to Use the Manual

The manual is organized to provide an easy flow from problem identification to problem correction. A list of troubleshooting symptoms containing most common engine problems begins on Page TS-a in Section TS - Troubleshooting Symptoms. Complete the described steps to locate and correct the problem.

Refer to Section TS for a guide to troubleshooting your engine. Follow the directions given on Page TS-1 to locate and correct engine problems.

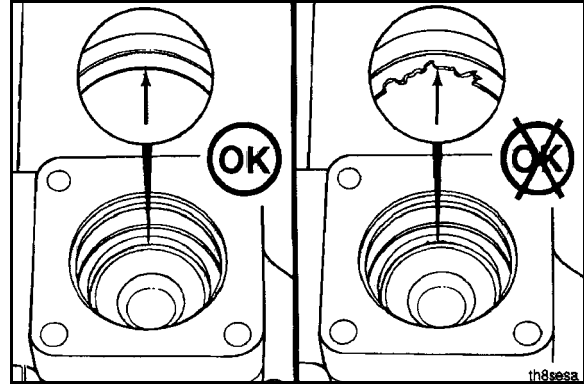
The Troubleshooting Symptoms Charts are based on the following assumption:

- The engine has been installed according to specifications.
- The easiest repairs are done first.
- Generic solutions to cover problems with the most common applications.

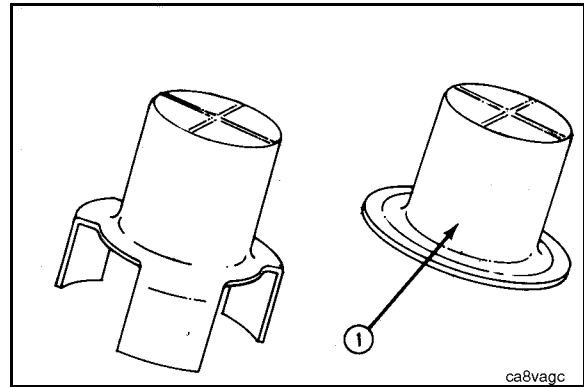
Refer to Section V for specifications recommended by Case Corporation for your engine. Specifications and torque values for each engine system are given in that section.

## Illustrations

Some of the illustrations throughout this manual are generic and will **not** look exactly like the engine or parts used in your application. The illustrations can contain symbols to indicate an action required and an acceptable or **not** acceptable condition.



The illustrations are intended to show repair or replacement procedures. The procedure will be the same for all applications, although the illustration can differ.



## General Safety Instructions

### Important Safety Notice

#### **⚠ WARNING ⚠**

**Improper practices or carelessness can cause burns, cuts, mutilation, asphyxiation or other bodily injury or death.**

Read and understand all of the safety precautions and warnings before performing any repair. This list contains the general safety precautions that **must** be followed to provide personal safety. Special safety precautions are included in the procedures when they apply.

- Make sure the work area surrounding the product is dry, well lit, ventilated, free from clutter, loose tools, parts, ignition sources and hazardous substances. Be aware of hazardous conditions that can exist.
- Always wear protective glasses and protective shoes when working.
- Rotating parts can cause cuts, mutilation or strangulation.
- Do not wear loose-fitting or torn clothing. Remove all jewelry when working.
- Disconnect the battery (negative [-] cable first) and discharge any capacitors before beginning any repair work. Disconnect the air starting motor if equipped to prevent accidental engine starting. Put a "Do Not Operate" tag in the operator's compartment or on the controls.
- Use **ONLY** the proper engine barring techniques for manually rotating the engine. Do not attempt to rotate the crankshaft by pulling or prying on the fan. This practice can cause serious personal injury, property damage, or damage to the fan blade(s) causing premature fan failure.
- If an engine has been operating and the coolant is hot, allow the engine to cool before you slowly loosen the filler cap and relieve the pressure from the cooling system.
- Do not work on anything that is supported **ONLY** by lifting jacks or a hoist. Always use blocks or proper stands to support the product before performing any service work.
- Relieve all pressure in the air, oil, fuel and the cooling systems before any lines, fittings, or related items are removed or disconnected. Be alert for possible pressure when disconnecting any device from a system that utilizes pressure. Do not check for pressure leaks with your hand. High pressure oil or fuel can cause personal injury.
- To prevent suffocation and frostbite, wear protective clothing and **ONLY** disconnect fuel and liquid refrigerant (freon) lines in a well ventilated area. To protect the environment, liquid refrigerant systems must be properly emptied and filled using equipment that prevents the release of refrigerant gas (fluorocarbons) into the atmosphere. Federal law requires capturing and recycling refrigerant.
- To avoid personal injury, use a hoist or get assistance when lifting components that weigh 23 kg [50 lb] or more. Make sure all lifting devices such as chains, hooks, or slings are in good condition and are of the correct capacity. Make sure hooks are positioned correctly. Always use a spreader bar when necessary. The lifting hooks must not be side-loaded.
- Corrosion inhibitor, a component of SCA and lubricating oil, contains alkali. Do not get the substance in your eyes. Avoid prolonged or repeated contact with skin. Do not swallow internally. In case of contact, immediately wash skin with soap and water. In case of contact, immediately flood eyes with large amounts of water for a minimum of 15 minutes. **IMMEDIATELY CALL A PHYSICIAN. KEEP OUT OF REACH OF CHILDREN.**
- Naptha and Methyl Ethyl Ketone (MEK) are flammable materials and must be used with caution. Follow the manufacturer's instructions to provide complete safety when using these materials. **KEEP OUT OF REACH OF CHILDREN.**
- To avoid burns, be alert for hot parts on products that have just been turned off, and hot fluids in lines, tubes, and compartments.
- Always use tools that are in good condition. Make sure you understand how to use them before performing any service work. Use **ONLY** Case approved replacement parts.
- Always use the same fastener part number (or equivalent) when replacing fasteners. Do not use a fastener of lesser quality if replacements are necessary.
- Do not perform any repair when fatigued or after consuming alcohol or drugs that can impair your functioning.
- Some state and federal agencies in the United States of America have determined that used engine oil can be carcinogenic and can cause reproductive toxicity. Avoid inhalation of vapors, ingestion, and prolonged contact with used engine oil.

It's a preview. You can download the full file by clicking the link below.

<https://shopservicemanual.com/>

Service Manuals from 2\$