

CX75SR-CX80 Crawler Excavators

Table of contents

REFERENCE N°

SERVICE MANUAL.....	9-93290GB
ENGINE SERVICE MANUAL (CC-4JG1).....	*
LARGE FORMAT HYDRAULIC AND ELECTRICAL SCHEMATICS (MODEL CX75SR)	9-43610
LARGE FORMAT HYDRAULIC AND ELECTRICAL SCHEMATICS (MODEL CX80)	9-43610

* *Consult the Engine Service Manual*

Configurations contained in this Service Manual:

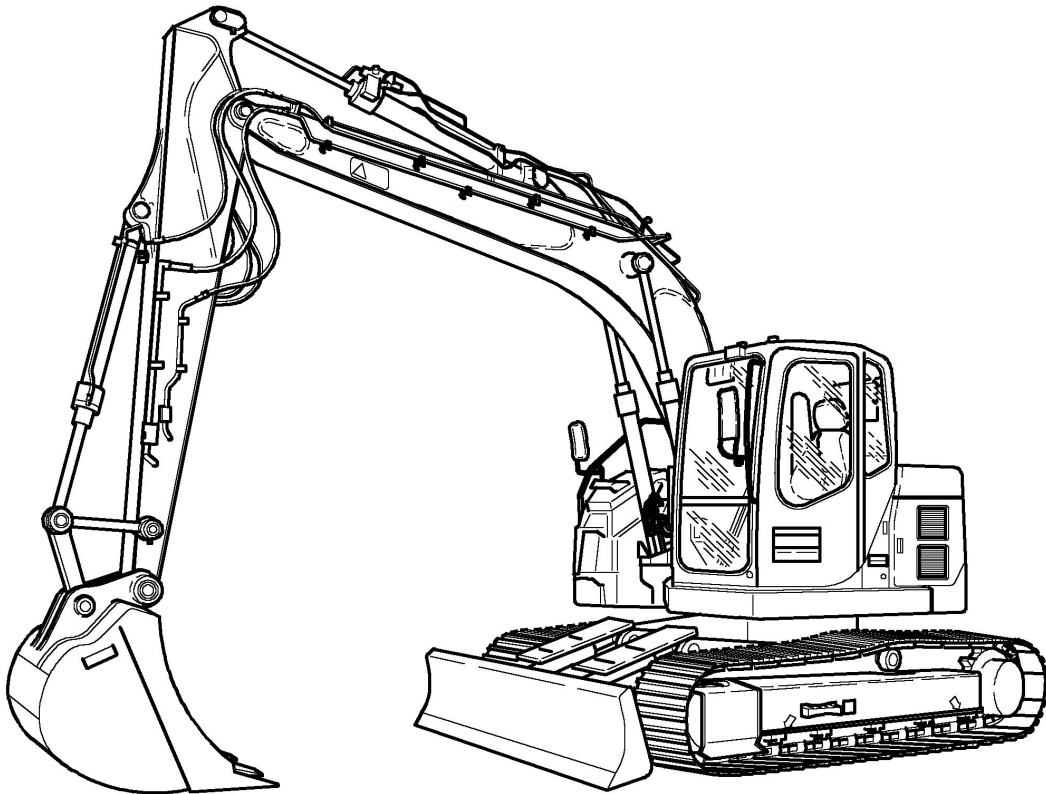
CX75SR NA	(North Model América)
CX75SR WE	(Model Europe)
CX75SR MONOBLOC BOOM	(Model equipped with monobloc boom)
CX75SR OFFSET BOOM	(Model equipped with offset boom)
CX80 NA	(North Model América)
CX80 WE	(Model Europe)

NOTE: CNH Company reserves the right to make changes in the specification and design of the machine without prior notice and without incurring any obligation to modify units previously sold.

The description of the models shown in this manual has been made in accordance with the technical specifications known as of the date of design of this document.

CASE

REPAIR MANUAL



**CX75SR
CX80**

Contents

INTRODUCTION
DISTRIBUTION SYSTEMS
POWER PRODUCTION
TRAVELLING
BODY AND STRUCTURE
FRAME POSITIONING
WORKING ARM
TOOLS AND COUPLERS

A
B
D
E
F
H
J



INTRODUCTION

It's a preview. You can download the full file by clicking the link below.

<https://shopservicemanual.com/>

Service Manuals from 2\$