

## Tracked Excavators JS120

Service Manual - JS120

[Section 1 - General Information](#)

[Section 2 - Operator's Manual](#)

[Section B - Body and Framework](#)

[Section F - Transmissions](#)

[Section E - Hydraulics](#)

[Section F - Transmissions](#)

[Section J - Track and Running Gear](#)

[Section K - Engine](#)



Publication No.  
9813/1300-02



Copyright © 2004 JCB SERVICE. All rights reserved. No part of this publication may be reproduced, stored in a retrieval system, or transmitted in any form or by any other means, electronic, mechanical, photocopying or otherwise, without prior permission from JCB SERVICE.

Issued by JCB Technical Publications, JCB Aftermarket Training, Woodseat, Rocester, Staffordshire, ST14 5BW, England. Tel +44 1889 591300 Fax +44 1889 591400

World Class  
Customer Support

## General Information

Service Manual - JS120

[Section 1 - General Information](#)

[Section 2 - Operator's Manual](#)

[Section B - Body and Framework](#)

[Section C - Electrics](#)

[Section E - Hydraulics](#)

[Section F - Transmissions](#)

[Section J - Track and Running Gear](#)

[Section K - Engine](#)



Publication No.  
**9813/1300-02**



Copyright © 2004 JCB SERVICE. All rights reserved. No part of this publication may be reproduced, stored in a retrieval system, or transmitted in any form or by any other means, electronic, mechanical, photocopying or otherwise, without prior permission from JCB SERVICE.



**Section 1 - General Information**

---

**Notes:**

---

---

---

---

---

---

---

---

---

---

---

---

---

---

---

---

---

---

---

---

---

<b>Contents</b>	<b>Page No.</b>
<b>Introduction</b>	
About this Manual .....	1-1
Machine Model and Serial Number .....	1-1
Using this Manual .....	1-1
Left Side, Right Side .....	1-1
Cross References .....	1-1
Machine Description .....	1-2
The JCB Tracked Excavator .....	1-2
Intended Use .....	1-2
Main Component Locations .....	1-4
Identifying Your Machine .....	1-5
Machine Identification Plate .....	1-5
Component Identification Plate .....	1-6
<b>Torque Settings</b>	
Zinc Plated Fasteners and Dacromet Fasteners .....	1-8
Introduction .....	1-8
Bolts and Screws .....	1-8
Hydraulic Connections .....	1-12
'O' Ring Face Seal System .....	1-12
'Torque Stop' Hose System .....	1-15
<b>Service Tools</b>	
Numerical List .....	1-16
Tool Detail Reference .....	1-18
Section B - Body and Framework .....	1-18
Section C - Electrics .....	1-22
Section E - Hydraulics .....	1-23
Section K - Engine .....	1-37
<b>Service Consumables</b>	
Sealing and Retaining Compounds .....	1-41
<b>Terms and Definitions</b>	
Colour Coding .....	1-43
Hydraulic Schematic Colour Codes .....	1-43

## Introduction

### About this Manual

#### Machine Model and Serial Number

This manual provides information for the following model(s) in the JCB machine range:

- JCB JS120 from serial number 1777500 to 1777999 onwards.
- JCB JS120 Upgrade from serial number 02425471 to 02426000

#### Using this Manual

T1-044

This manual is arranged to give you a good understanding of the machine and its safe operation. It also contains maintenance information and specification data. Read this manual from front to back before using the machine for the first time. Particular attention must be given to all the safety aspects of operating and maintaining the machine.

If there is anything you are not sure about, ask your JCB distributor or employer. Do not guess, you or others could be killed or seriously injured.

General warnings in this chapter are repeated throughout the book, as well as specific warnings. Read all the safety statements regularly, so you do not forget them. Remember that the best operators are the safest operators.

The illustrations in this manual are for guidance only. Where the machines differ, the text and or the illustration will specify.

This manual contains original instructions, verified by the manufacturer (or their authorised representative).

The manufacturer's policy is one of continuous improvement. The right to change the specification of the machine without notice is reserved. No responsibility will be accepted for discrepancies which may occur between specifications of the machine and the descriptions contained in this publication.

All optional equipment included in this manual may not be available in all territories.

#### Left Side, Right Side

In this manual, 'left' **A** and 'right' **B** mean your left and right when you are seated correctly in the machine.

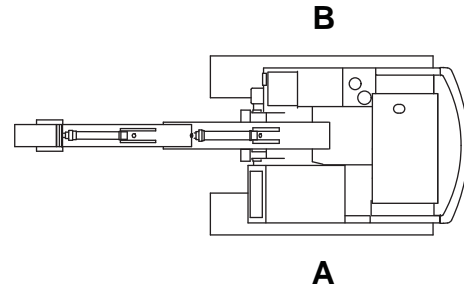


Fig 1.

#### Cross References

T1-004\_2

In this publication, page cross references are made by presenting the subject title printed in bold, italic and underlined. It is preceded by the 'go to' symbol. The number of the page upon which the subject begins, is indicated within the brackets. For example: ⇒ **Cross References (1-1)**.

It's a preview. You can download the full file by clicking the link below.

<https://shopservicemanual.com/>

Service Manuals from 2\$