

Liftall 1253/1202/1553/1554

Service Manual - Liftall 1253/1202/1553/1554

[Section 1 - General Information](#)

[Section 2 - Care and Safety](#)

[Section 3 - Routine Maintenance](#)

[Section B - Body and Framework](#)

[Section C - Electrics](#)

[Section D - Controls](#)

[Section E - Hydraulics](#)

[Section F - Transmission](#)

[Section G - Brakes](#)

[Section K - Engine](#)



Publication No.
9813/1650



Copyright © 2007 JCB SERVICE. All rights reserved. No part of this publication may be reproduced, stored in a retrieval system, or transmitted in any form or by any other means, electronic, mechanical, photocopying or otherwise, without prior permission from JCB SERVICE.

General Information

Service Manual - Liftall 1253/1202/1553/1554

[Section 1 - General Information](#)

[Section 2 - Care and Safety](#)

[Section 3 - Routine Maintenance](#)

[Section B - Body and Framework](#)

[Section C - Electrics](#)

[Section D - Controls](#)

[Section E - Hydraulics](#)

[Section F - Transmission](#)

[Section G - Brakes](#)

[Section K - Engine](#)



Publication No.
9813/1650



Copyright © 2007 JCB SERVICE. All rights reserved. No part of this publication may be reproduced, stored in a retrieval system, or transmitted in any form or by any other means, electronic, mechanical, photocopying or otherwise, without prior permission from JCB SERVICE.



Section 1 - General Information

Contents	Page No.
General Information	
Machine Identification	1-1
Machine Identification Plate	1-1
Load Chart	1-3
Torque	1-7
Torque Settings	1-7
Tightening Torque Values for Metric Hardware	1-8
Tightening Torque Values for Hydraulic Hoses	1-8
Tightening Torque Values for Hydraulic Adaptor	1-8
Service Tools	1-9
Numerical List	1-13
Tool Detail Reference	1-15
Section B - Body and Framework	1-15
Section C - Electrics	1-19
Section E - Hydraulics	1-20
Section K - Engine	1-34

General Information

Machine Identification

Machine Identification Plate

Your machine has an identification plate **X** mounted on the Chassis as shown. The serial numbers of the machine and its major units are stamped on the plate.

The serial number of each major unit is also stamped on the unit itself. If a major unit is replaced by a new one, the serial number on the identification plate will be wrong. Either stamp the new number of the unit on the identification plate, or simply stamp out the old number. This will prevent the wrong number being quoted when replacement parts are ordered.

The machine and engine serial numbers can help identify exactly the type of equipment you have → [Fig 1.](#) ([□ 1-1](#)).

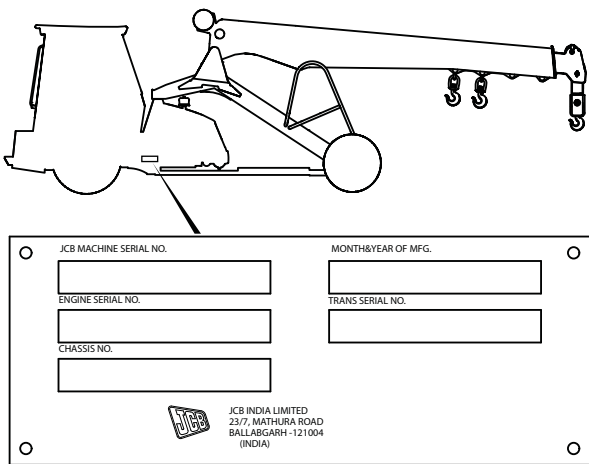


Fig 1.

P009450

Unit Identification

Engine Serial Plate

The engine serial number is stamped on a label which is fastened to the left side of the cylinder block (looking from the rear) → [Fig 2.](#) ([□ 1-1](#)).

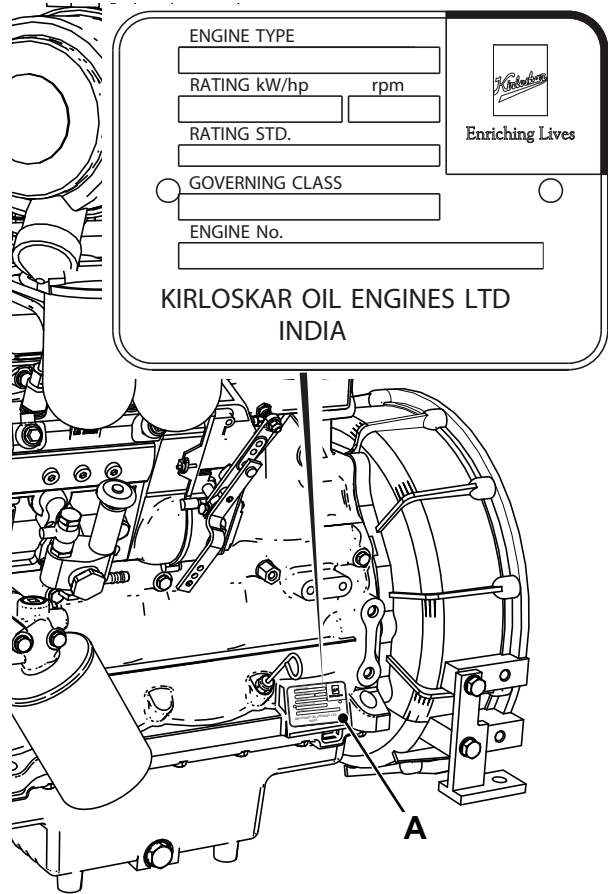


Fig 2.

D023815

Transmission Axle Serial Plate

The transmission axle serial number is stamped on a plate mounted to the front face of the axle, as shown → [Fig 3.](#) ([□ 1-2](#)).

It's a preview. You can download the full file by clicking the link below.

<https://shopservicemanual.com/>

Service Manuals from 2\$