

506-36, 507-42, 509-42, 510-56, 512-56, 514-56

[Section 1 - General Information](#)

[Section 2 - Care and Safety](#)

[Section 3 - Routine Maintenance](#)

[Section B - Body and Framework](#)

[Section C - Electrics](#)

[Section E - Hydraulics](#)

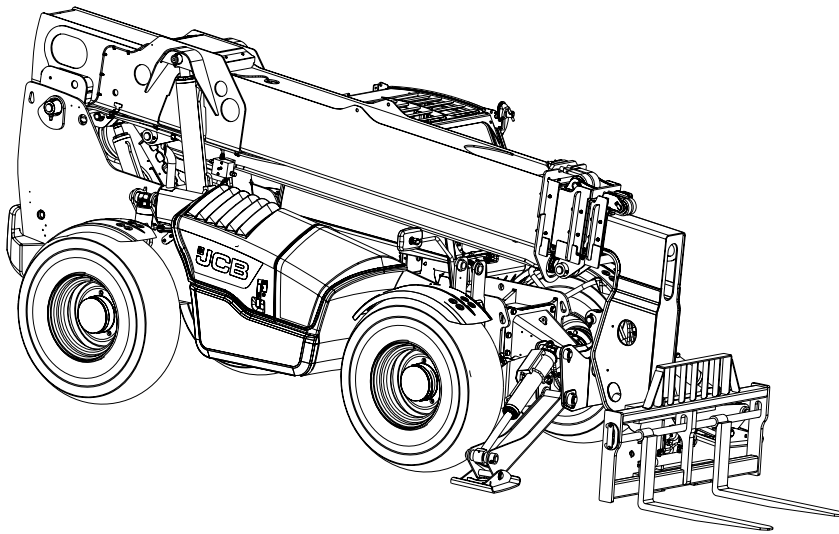
[Section F - Transmission](#)

[Section G - Brakes](#)

[Section H - Steering](#)

[Section K - Engine](#)

[Section M - Electronic Network](#)



Publication No.
9813/1800-2



Copyright © 2004 JCB SERVICE. All rights reserved. No part of this publication may be reproduced, stored in a retrieval system, or transmitted in any form or by any other means, electronic, mechanical, photocopying or otherwise, without prior permission from JCB SERVICE.

Issued by JCB Technical Publications, JCB Aftermarket Training, Woodseat, Rocester, Staffordshire, ST14 5BW, England. Tel +44 1889 591300 Fax +44 1889 591400

World Class
Customer Support

General Information

Service Manual - 506-36, 507-42, 509-42, 510-56, 512-56, 514-56

[Section 1 - General Information](#)

[Section 2 - Care and Safety](#)

[Section 3 - Routine Maintenance](#)

[Section B - Body and Framework](#)

[Section C - Electrics](#)

[Section E - Hydraulics](#)

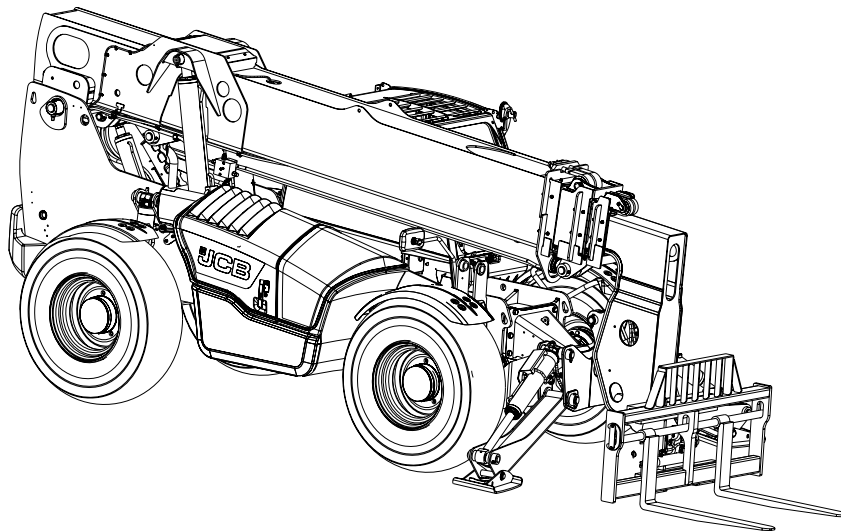
[Section F - Transmission](#)

[Section G - Brakes](#)

[Section H - Steering](#)

[Section K - Engine](#)

[Section M - Electronic Network](#)



Publication No.
9813/1800-2



Copyright © 2004 JCB SERVICE. All rights reserved. No part of this publication may be reproduced, stored in a retrieval system, or transmitted in any form or by any other means, electronic, mechanical, photocopying or otherwise, without prior permission from JCB SERVICE.

Issued by JCB Technical Publications, JCB Aftermarket Training, Woodseat, Rocester, Staffordshire, ST14 5BW, England. Tel +44 1889 591300 Fax +44 1889 591400

World Class
Customer Support



Notes:



Section 1 - General Information

Contents	Page No.
Applications	
Introduction	1-1-1
Tables	1-1-2
Use	
Introduction	1-2-1
Scope	1-2-2
Format	1-2-3
Left and Right Sides	1-2-4
Hydraulic Schematic Codes	1-2-5
Machine Identification	
Introduction	1-3-1
Related Topics	1-3-2
Machine Identification Plate	1-3-3
Component Identification Plates	1-3-7
Torque Settings	
Introduction	1-4-1
Zinc Plated Fasteners and Dacromet Fasteners	1-4-2
Hydraulic Connections	1-4-6
'Positional Type' Hydraulic Adaptors	1-4-10
Service Tools	
Introduction	1-5-1
Numerical List	1-5-2
Tool Detail Reference	1-5-5
Rivet Nuts	1-5-27
Slide Hammer Kit	1-5-29
Service Consumables	
Introduction	1-6-1
Sealing and Retaining Compounds	1-6-2
Fuel	
Introduction	1-7-1
Related Topics	1-7-2
Acceptable and Unacceptable Fuels	1-7-3
Stall Speed Combinations	
Introduction	1-8-1
Related Topics	1-8-2
Specifications	1-8-3



Section 1 - General Information

Contents

Page No.

It's a preview. You can download the full file by clicking the link below.

<https://shopservicemanual.com/>

Service Manuals from 2\$