

Service Manual

**3CX, 4CX,
214e, 214, 215, 217
& VARIANTS**

Backhoe Loader

**From M/c No. 930000 Onwards
From M/c No. 903000 Onwards (USA)**

PUBLISHED BY THE
TECHNICAL PUBLICATIONS DEPARTMENT
OF JCB SERVICE; © WORLD PARTS CENTRE,
WATERLOO PARK, UTTOXETER, ST14 5PA
ENGLAND

Tel. ROCESTER (01889) 590312
PRINTED IN ENGLAND

Publication No. 9803/3280 Issue 9

General Information	1
Care & Safety	2
Routine Maintenance	3
Attachments	A
Body & Framework	B
Electrics	C
Controls	D
Hydraulics	E
Transmission	F
Brakes	G
Steering	H
Engine	K
Servo Controls (Precision Controls)	L

Introduction

This publication is designed for the benefit of JCB Distributor Service Engineers who are receiving, or have received, training by JCB Technical Training Department.

These personnel should have a sound knowledge of workshop practice, safety procedures, and general techniques associated with the maintenance and repair of hydraulic earthmoving equipment.

Renewal of oil seals, gaskets, etc., and any component showing obvious signs of wear or damage is expected as a matter of course. It is expected that components will be cleaned and lubricated where appropriate, and that any opened hose or pipe connections will be blanked to prevent excessive loss of hydraulic fluid and ingress of dirt. Finally, please remember above all else **SAFETY MUST COME FIRST!**

The manual is compiled in sections, the first three are numbered and contain information as follows:

1 = **General Information** - includes torque settings and service tools.
2 = **Care & Safety** - includes warnings and cautions pertinent to aspects of workshop procedures etc.
3 = **Routine Maintenance** - includes service schedules and recommended lubricants for all the machine.

The remaining sections are alphabetically coded and deal with Dismantling, Overhaul etc. of specific components, for example:

A = **Attachments**
B = **Body & Framework** ...etc.

The page numbering in each alphabetically coded section is not continuous. This allows for the insertion of new items in later issues of the manual.

Section contents, technical data, circuit descriptions, operation descriptions etc are inserted at the beginning of each alphabetically coded section.

All sections are listed on the front cover; tabbed divider cards align directly with individual sections on the front cover for rapid reference.

Where a torque setting is given as a single figure it may be varied by plus or minus 3%. Torque figures indicated are for dry threads, hence for lubricated threads may be reduced by one third.

With the exception of slewing operations 'Left Hand' and 'Right Hand' are as viewed from the rear of the machine facing forwards.








Machine Nomenclature

In this Service Manual, reference is made to machine models, e.g. 3CX, 4CX, these are European machine model names. North American machine models have different names, the table below shows the European and the equivalent North American nomenclature.

European		North American
3CX	=	214
4CX	=	214S, 215S, 217S

Colour Coding

The following colour coding, used on illustrations to denote various conditions of oil pressure and flow, is standardised throughout JCB Service publications.

-  **Red** — **Full Pressure**
Pressure generated from operation of a service. Depending on application this may be anything between neutral circuit pressure and M.R.V. operating pressure.
-  **Pink** — **Pressure**
Pressure that is above neutral circuit pressure but lower than that denoted by red.
-  **Orange** — **Servo**
Oil pressure used in controlling a device (servo).
-  **Blue** — **Neutral**
Neutral circuit pressure.
-  **Green** — **Exhaust**
-  **Light Green** — **Cavitation**
Oil subjected to a partial vacuum due to a drop in pressure (cavitation).
-  **Yellow** — **Lock Up**
Oil trapped within a chamber or line, preventing movement of components (lock up).

A390940

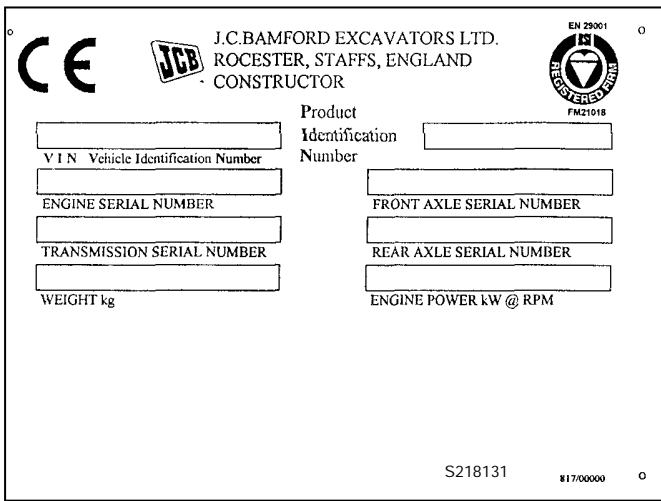
Contents	Page No.
Machine Identification Plate	1 - 1
Typical Vehicle Identification Number (VIN)	1 - 1
Typical Engine Identification Number	1 - 1
Serial Plates	1 - 2
Torque Settings	2 - 1
Service Tools Numerical List	3 - 1
Service Tools	
- Body & Framework	4 - 1
- Electrics	4 - 4
- Hydraulics	4 - 6
- Transmission	4 - 10
- Engine	4 - 19*
Sealing and Retaining Compounds	5 - 1

Machine Identification Plate

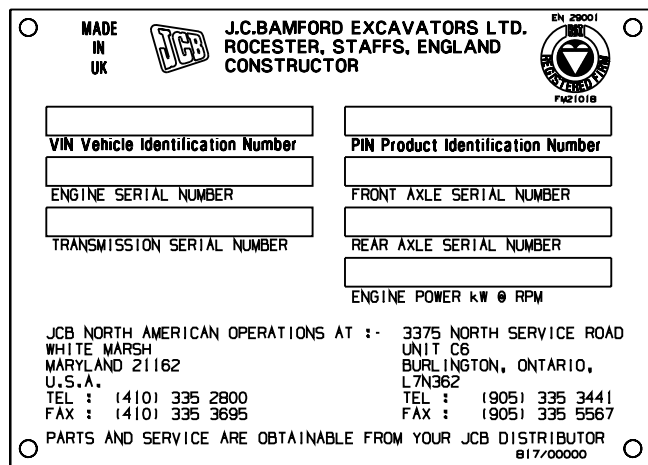
Your machine has an identification plate mounted on the loader tower. The serial numbers of the machine and its major units are stamped on the plate.

The serial number of each major unit is also stamped on the unit itself. If a major unit is replaced by a new one, the serial number on the identification plate will be wrong. Either stamp the new number of the unit on the identification plate, or simply stamp out the old number. This will prevent the wrong unit number being quoted when replacement parts are ordered.

The machine and engine serial numbers can help identify exactly the type of equipment you have.



U.K. and R.O.W.



North America

A246740

Typical Vehicle Identification Number (VIN)

SLP 3CX T S V E 930000
A B C D E F G

- A** World Manufacturer Identification
- B** Machine Model
- C** Steer Type (T= 2WS, F=4WS)
- D** Build Type (S=Sideshift, C=Centremount, L=Loader)
- E** Year of Manufacture:
 2 = 2002
 3 = 2003
 4 = 2004
 5 = 2005
 6 = 2006
 7 = 2007
 8 = 2008
- F** Manufacturer Location (E = England)
- G** Product Identification Number (PIN)

Typical Engine Identification Number

AB 50262 U 500405 P
A B C D E

- A** Engine Type
 AB = 4 cylinder turbo
- B** Build Number
- C** Country of Origin
- D** Engine Sequence Number
- E** Year of Manufacture

It's a preview. You can download the full file by clicking the link below.

<https://shopservicemanual.com/>

Service Manuals from 2\$