

# Shop Manual

# PW170ES-6K

## HYDRAULIC EXCAVATOR

SERIAL NUMBERS **PW170ES-6 -K30001** and up

This material is proprietary to Komatsu America International Company and is not to be reproduced, used, or disclosed except in accordance with written authorization from Komatsu America International Company.

It is our policy to improve our products whenever it is possible and practical to do so. We reserve the right to make changes or add improvements at any time without incurring any obligation to install such changes on products sold previously.

Due to this continuous program of research and development, periodic revisions may be made to this publication. It is recommended that customers contact their distributor for information on the latest revision.

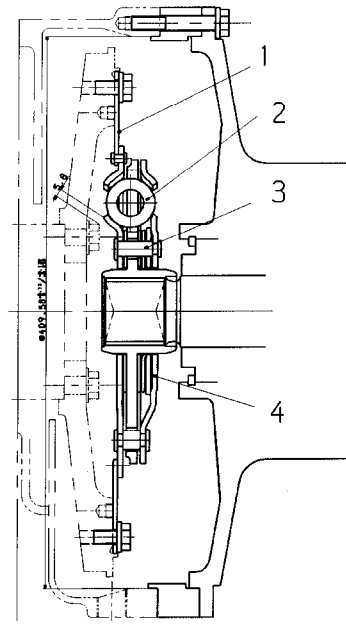
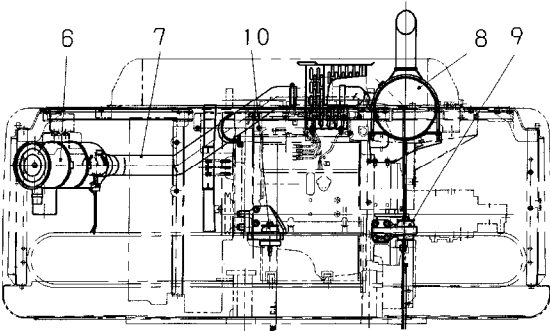
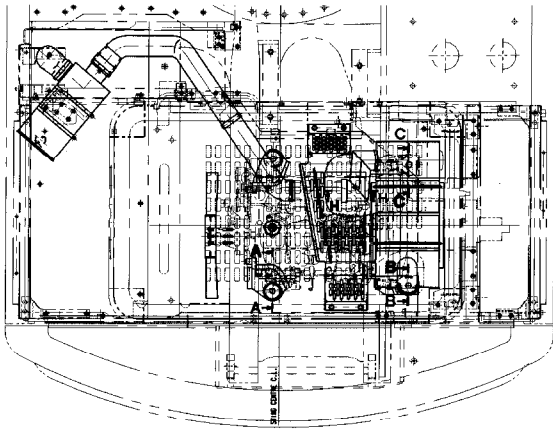
---

# 10 STRUCTURE AND FUNCTION

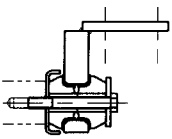
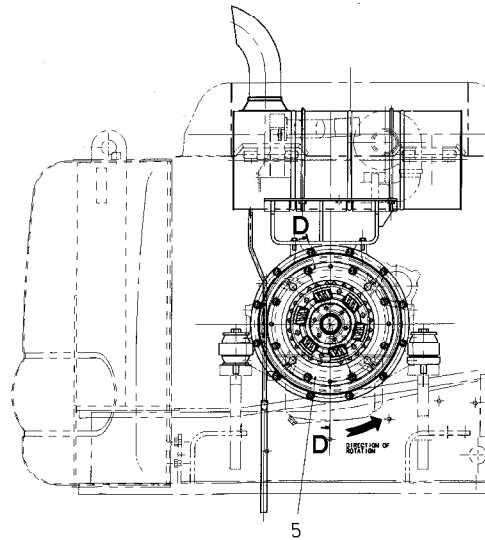
---

Engine related parts .....	10-2
Radiator, oil cooler, aftercooler .....	10-3
Power train .....	10-4
Swing circle .....	10-5
Swing machinery .....	10-6
Undercarriage .....	10-8
Transmission .....	10-9
Axle10-10	
Suspension Lock Cylinder .....	10-14
Braking train .....	10-16
Break pedal .....	10-17
Break valve .....	10-18
Accumulator For Brake System .....	10-19
Steering train .....	10-20
Steering column .....	10-22
Hydraulic circuit diagram .....	10-23
Hydraulic tank .....	10-24
Hydraulic pump .....	10-25
Control valve .....	10-32
CLSS .....	10-38
Swing motor .....	10-73
Center swivel joint .....	10-75
Travel motor (Front, Rear) .....	10-76
Work equipment, swing PPC valve 10-78	
Travel PPC valve .....	10-82
Service PPC valve .....	10-83
Safety lock valve .....	10-86
PPC accumulator .....	10-86
PPC shuttle, travel joint valve .....	10-87
EPC, solenoid valve .....	10-91
Additional filter for breaker .....	10-100
Boom holding valve .....	10-101
Hydraulic cylinder .....	10-107
Work equipment .....	10-111
Electrical wiring diagram .....	10-112A
.....	10-112B
.....	10-112C
Engine control system .....	10-113
Electronic control system .....	10-119
Machine monitor system .....	10-145

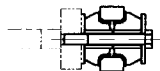
ENGINE RELATED PARTS



D-D



A-A



B-B



C-C



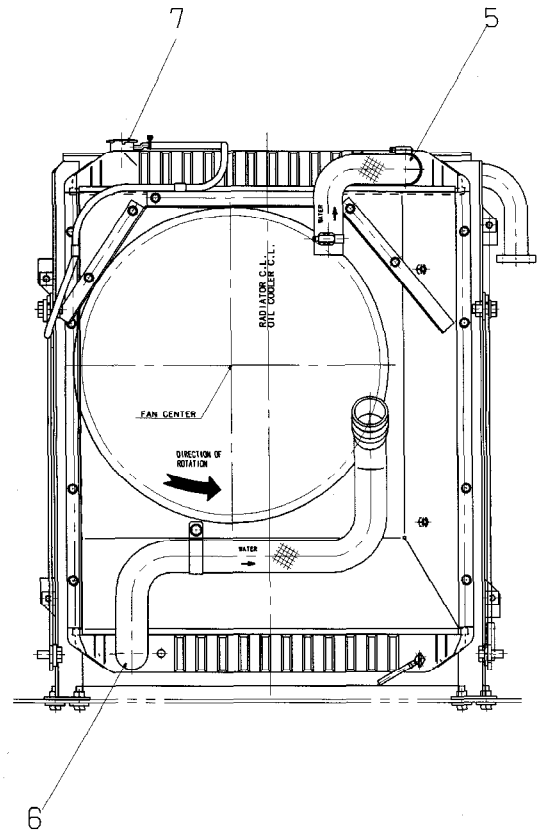
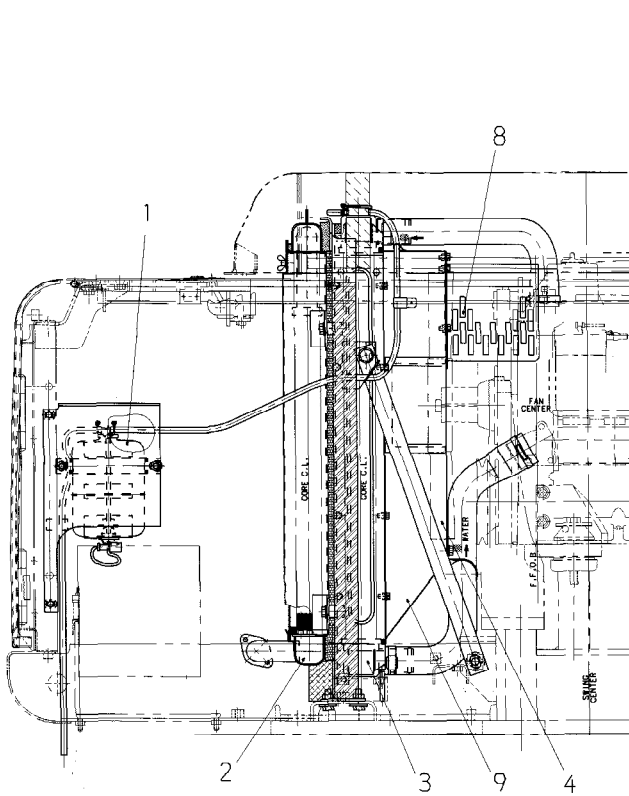
H-H

1. Drive plate
2. Torsion spring
3. Stopper pin
4. Friction plate
5. Damper assembly
6. Air cleaner
7. Intake connector
8. Muffler
9. Rear engine mount
10. Front engine mount

**OUTLINE**

- The damper assembly is a dry type.

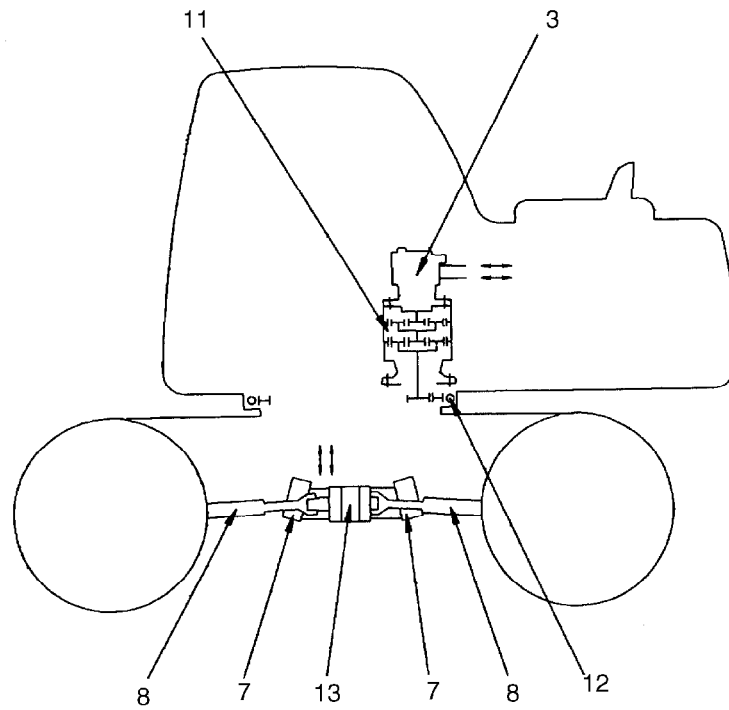
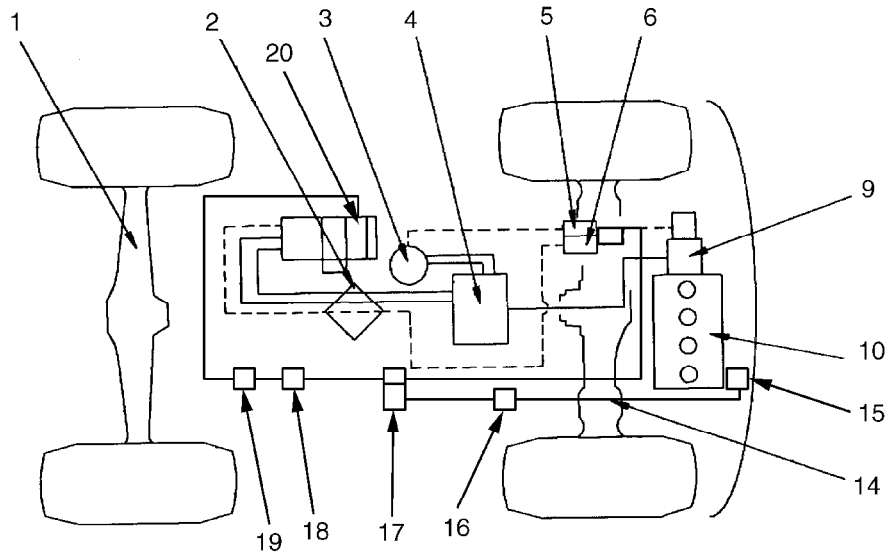
RADIATOR • OIL COOLER



1. Reservoir tank
2. Oil cooler
3. Radiator
4. Fan
5. Radiator inlet hose
6. Radiator outlet hose
7. Radiator cap
8. Net
9. Shroud

**SPECIFICATIONS**

Radiator: CWX-4  
 Oil cooler: SF-3



KW130P6001

- |                                |                             |
|--------------------------------|-----------------------------|
| 1. Front axle                  | 11. Swing machinery         |
| 2. Center swivel joint         | 12. Swing circle            |
| 3. Swing motor                 | 13. Transmission            |
| 4. Control valve               | 14. Rear axle               |
| 5. Swing brake solenoid valve  | 15. Gear pump               |
| 6. Travel speed solenoid valve | 16. Priority valve          |
| 7. Travel motor                | 17. Power brake valve       |
| 8. Propshaft                   | 18. Pressure reducing valve |
| 9. Hydraulic pump              | 19. Clutch control valve    |
| 10. Engine                     | 20. Clutch                  |

It's a preview. You can download the full file by clicking the link below.

<https://shopservicemanual.com/>

Service Manuals from 2\$