



This Parts Catalog has been prepared to make it easier for you to order parts for your motorcycles. The numbers shown in the illustrations correspond to the numbers in the "INDEX NO." column in the parts lists. Consult the illustrations when ordering parts to make sure that you receive all the required parts. The number in parentheses following the part description is the quantity needed for complete assembly. If there is no number in parentheses, only one is used. Prices of parts in this catalog are published separately.

When ordering parts, the following instructions should be followed carefully.

- Make sure to specify the correct part number for each item. The part numbers appear under the "PART NO." column in the parts lists.
- Orders may be placed via your computer for all parts. Review your system documentation on placing orders electronically. All non-warranty replacement crankcase orders require return of the complete left crankcase half with vehicle identification number (VIN). All non-warranty replacement frame orders require return of the steering neck with vehicle identification number (VIN). Non-compliance will result in a fine. See non-warranty frame and crankcase policy or contact Dealer Services.
- The sale or use of these parts or accessories does not grant the purchaser a license or other right under any Harley-Davidson patent.
- For all 2008 and later painted parts, refer to the Service Section of h-dnet.com which features a listing of painted part numbers, except CVO (Custom Vehicle Operations) models which are located in their own respective catalogs.
- All parts that were added for the new model year will have the entire line shaded on the parts list page. This can be used to identify any new parts that are unique to a specific model, and help distinguish new and previous model year parts.
- Parts marked "**RESTRICTED SALE PART**" are limited edition items and can only be ordered as direct replacements.
- Orientation symbols are used when the illustration is not in the standard "Right-Front" orientation. The symbol is a motorcycle with an arrow in the front indicating the direction of view. The symbol is at the bottom left or right side of the illustration page.
- To request a missing or loose part, simply submit a Return Material Authorization (RMA) claim on h-dnet.com with code "T-part not included with vehicle" for all vehicle missing parts claims. Then place an order for the missing item on your next Parts and Accessories order. Upon filing the RMA claim, your dealership will be credited for the dealer net cost of the part. The Vehicle Identification Number must be included on the RMA claim in order for you to receive credit. This process is to be used for vehicles manufactured at all plants.

To the best knowledge of Harley-Davidson Motor Company, the material contained herein is accurate as of the date this publication was approved for printing. Harley-Davidson Motor Company reserves the right to change specifications, equipment or designs at any time without notice and without incurring obligation.

©2019 H-D.

## GENERAL INFORMATION

### LOOSE PARTS

The Loose Parts section is located at the back of this parts catalog. This section lists the parts which are shipped unfastened with the vehicles covered in this catalog.

### HARDWARE LIST

The Hardware List is located at the back of this parts catalog. This section contains the information for each piece of hardware found in each parts list.

### NEW PARTS LIST

The New Parts List is located at the back of this parts catalog. This list serves as a summary of new parts.

### NUMERICAL INDEX

The Numerical Index is located at the back of this parts catalog. This index includes all part numbers used in this catalog and the page numbers of where they can be found.

### COMPONENT TYPES AND INTRODUCTION DATES

The Component Types and Introduction Dates section is located at the back of this parts catalog. This section contains a list of component part numbers and year of introduction.

### COMMON SERVICE PARTS

The Common Service Parts section is located at the back of this parts catalog. This section contains the most commonly ordered parts for service on vehicles covered in this catalog. These parts are ordered through the normal ordering process.

### SIP (SERVICE INFORMATION PORTAL)

For the latest updates to these manuals, see the Service Information Portal.

### VEHICLE IDENTIFICATION NUMBER

See Figure 1. A unique 17-digit serial, or vehicle identification number (VIN), is assigned to each motorcycle. For a description of each digit in the vehicle identification number (VIN), refer to Table 1.

For all models except V-Rod the full 17-digit serial, or vehicle identification number (VIN), is stamped on the right side of the frame backbone at the rear of the steering head. The vehicle identification number (VIN) is also printed on a label on the right front downtube. An abbreviated vehicle identification number (VIN) is stamped on the left side crankcase between the front and rear cylinders.

For V-Rod models only the full 17-digit serial, or vehicle identification number (VIN), is stamped on the right side of the steering head. The vehicle identification number (VIN) is also printed on a label on the left frame tube above the front engine cylinder. An abbreviated vehicle identification number (VIN) is stamped on the left side crankcase below the rear cylinder head.

Always give the full 17-digit vehicle identification number (VIN) when ordering parts or making any inquiry about your motorcycle.

## 2020 TOURING MODELS

### VIN Model Codes

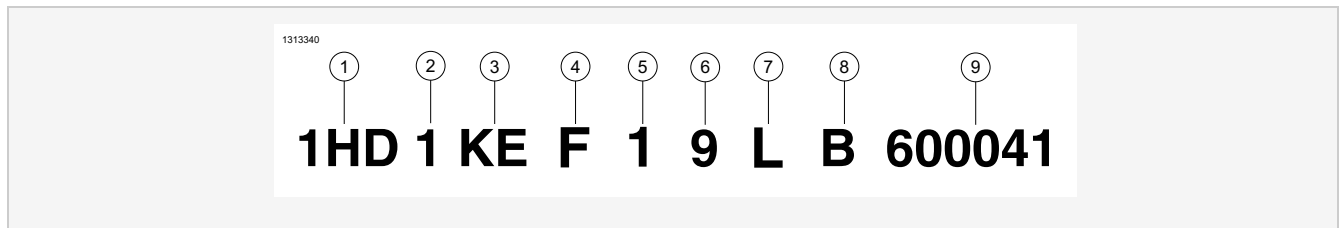


Figure 4. Typical Harley-Davidson VIN

Table 1. Harley-Davidson VIN Breakdown

POSITION	DESCRIPTION	POSSIBLE VALUES
1	World manufacturer identifier	1HD=Originally manufactured in the United States 5HD=Originally manufactured in the United States for sale outside of the United States 932=Originally manufactured in Brazil MEG=Originally manufactured in India MLY=Originally manufactured in Thailand
2	Motorcycle type	1=Heavyweight motorcycle (901 cm <sup>3</sup> or larger)
3	Model	See VIN model table
4	Engine type	C=Milwaukee-Eight™ 107 Engine, 1745 cm <sup>3</sup> F=Twin-Cooled™ Milwaukee-Eight™ 114 Engine, 1868 cm <sup>3</sup> P=Milwaukee-Eight™ 114 Engine, 1868 cm <sup>3</sup>
5	Calibration/configuration, introduction	1=Domestic (DOM) 2=California (CAL) 3=Canada (CAN) 4=HDI 5=Japan (JPN) 6=Australia (AUS) 7=Brazil (BRZ) 8=Asia Pacific (APC) 9=India (IND) 0=ASEAN (AZN) A=China (CHN)
6	VIN check digit	Can be 0-9 or X
7	Model year	L=2020
8	Assembly plant	B=York, PA U.S.A. D=H-D Brazil-Manaus, Brazil (CKD) N=Haryana India (Bawal District Rewari) S=Tasit, Pluagdang, Rayong, Thailand
9	Sequential number	Varies

Table 2. VIN Model Codes

CODE	MODEL	CODE	MODEL
FB	Road King® (FLHR)	KN	Electra Glide® Ultra Limited Shrine (FLHTKSHRINE)
FV	Electra Glide® Standard (FLHT)	KR	Street Glide® Special (FLHXS)
KB	Street Glide® (FLHX)	KT	Road Glide® Special (FLTRXS)
KE	Electra Glide® Ultra Limited (FLHTK)	KV	Road King® Special (FLHRXS)
KH	Road Glide® (FLTRX)	KZ	Road Glide® Limited (FLTRK)

## NOTES

ABS MODULE  
 AIR CLEANER  
 AIR DEFLECTORS  
 AIR DEFLECTORS  
 AIR FILTER, ENGINE  
 ALTERNATOR AND REGULATOR  
 ANTENNA, GPS - FLHTK, FLHX AND FLHXS  
 ANTENNA, GPS - FLTRK, FLTRX AND FLTRXS  
 ANTENNAS  
 AUXILIARY/FOG LAMPS AND TURN SIGNALS, FRONT - FLHR  
 AUXILIARY/FOG LAMPS AND TURN SIGNALS, FRONT - FLHTK (1 OF 2)  
 AUXILIARY/FOG LAMPS AND TURN SIGNALS, FRONT - FLHTK (2 OF 2)  
 AXLE, FRONT, CAST  
 BALANCER ASSEMBLY - Milwaukee-Eight® 107 engine  
 BALANCER ASSEMBLY - Milwaukee-Eight® 114 engine  
 BATTERY  
 BATTERY CABLES  
 BEARING HOUSING, TRANSMISSION  
 BELT GUARD  
 BELT, CHAIN AND SPROCKETS  
 BODY CONTROL MODULE (BCM)  
 BRAKE CALIPER, FRONT  
 BRAKE CALIPER, REAR  
 BRAKE CONTROL, FRONT  
 BRAKE CONTROL, REAR  
 BRAKE DISC, FRONT, CAST  
 BRAKE DISC, REAR  
 BRAKE LEVER, FRONT  
 BRAKE LEVER, REAR  
 BRAKE LINES AND MODULE, REAR - ABS  
 BRAKE LINES, FRONT - ABS  
 BRAKE MASTER CYLINDER, FRONT  
 BRAKE MASTER CYLINDER, REAR  
 BRAKE MODULE, ABS  
 BULB, FRONT TURN SIGNALS - FLHR  
 BULB, FRONT TURN SIGNALS - FLHTK  
 BULB, FRONT TURN SIGNALS - FLHX AND FLHXS  
 BULB, FRONT TURN SIGNALS - FLTRK, FLTRX AND FLTRXS  
 BULB, HEADLAMP - FLHT, FLHTK, FLHX AND FLHXS  
 BULB, REAR TURN SIGNALS - FLHR  
 BULB, REAR TURN SIGNALS - FLHRXS, FLHX, FLHXS, FLTRX, FLTRXS  
 BULB, REAR TURN SIGNALS - FLHT  
 BULB, REAR TURN SIGNALS - FLHTK, FLTRK (HDI)  
 CALIPER, FRONT BRAKE  
 CALIPER, REAR BRAKE  
 CAMSHAFT COVER  
 CAMSHAFT SUPPORT PLATE

CAMSHAFTS AND CAMSHAFT COVER (1 OF 2)  
CAMSHAFTS AND CAMSHAFT COVER (2 OF 2)  
CARBON CANISTER  
CHAIN, PRIMARY  
CHECK VALVE, OIL PRESSURE  
CLUTCH  
CLUTCH CABLE  
CLUTCH CONTROL  
CLUTCH CONTROL HAND LEVER  
CLUTCH LINE  
CONNECTING ROD - Milwaukee-Eight® 107 engine  
CONNECTING ROD - Milwaukee-Eight® 114 engine  
CONSOLE, FUEL TANK - FLHT, FLHTK, FLHX, FLHXS, FLTRK, FLTRX AND FLTRXS (1 OF 2)  
CONSOLE, FUEL TANK - FLHT, FLHTK, FLHX, FLHXS, FLTRK, FLTRX AND FLTRXS (2 OF 2)  
COOLANT DISTRIBUTION - AIR-COOLED  
COOLANT DISTRIBUTION - TWIN-COOLED™  
COOLANT HOSES, RADIATOR  
COOLANT PUMP, TWIN-COOLED™  
COOLING SYSTEM, ENGINE, AIR-COOLED  
COOLING SYSTEM, ENGINE, TWIN-COOLED™  
COVER, PUSHRODS  
COVERS AND AIR DEFLECTORS  
CRANKCASE  
CRANKCASE BEARINGS  
CRANKSHAFT - Milwaukee-Eight® 107 engine  
CRANKSHAFT - Milwaukee-Eight® 114 engine  
CYLINDER HEADS  
CYLINDERS, HEADS AND VALVES  
DEBRIS DEFLECTOR  
DIPSTICK, OIL TANK  
ELECTRONIC CONTROL MODULE (ECM) AND COIL  
ENGINE ASSEMBLY - Milwaukee-Eight® 107 engine  
ENGINE ASSEMBLY - Milwaukee-Eight® 114 engine  
ENGINE MOUNTS AND STABILIZER LINK  
ENGINE SENSORS AND SWITCHES  
EVAPORATIVE EMISSIONS COMPONENTS  
EXHAUST SYSTEM (1 OF 2)  
EXHAUST SYSTEM (2 OF 2)  
FAIRING, INNER - FLHT, FLHTK, FLHX AND FLHXS (1 OF 3)  
FAIRING, INNER - FLHT, FLHTK, FLHX AND FLHXS (2 OF 3)  
FAIRING, INNER - FLHT, FLHTK, FLHX AND FLHXS (3 OF 3)  
FAIRING, INNER - FLTRK, FLTRX AND FLTRXS (1 OF 2)  
FAIRING, INNER - FLTRK, FLTRX AND FLTRXS (2 OF 2)  
FAIRING, LOWERS, TWIN-COOLED™ - FLHTK, FLTRK  
FAIRING, OUTER - FLHT, FLHTK, FLHX AND FLHXS  
FAIRING, OUTER - FLTRK, FLTRX AND FLTRXS  
FAN ASSEMBLY, RADIATOR  
FENDERS, FRONT  
FENDERS, REAR  
FILTER, AIR  
FILTER, FUEL - FLHR, FLHRXS  
FILTER, FUEL - FLHT, FLHTK, FLHX, FLHXS, FLTRK, FLTRX AND FLTRXS  
FILTER, OIL  
FLYWHEEL ASSEMBLY - Milwaukee-Eight® 107 engine  
FLYWHEEL ASSEMBLY - Milwaukee-Eight® 114 engine  
FOG LAMPS - FLHR  
FOG LAMPS - FLHTK  
FOOTBOARDS AND FOOTPEGS, PASSENGER  
FOOTBOARDS, OPERATOR  
FOOTPEGS, PASSENGER  
FORK BRACKETS, FRONT  
FORK LOCK  
FORK, FRONT  
FORK, REAR  
FRAME AND FORK, REAR AND TOUR-PAK SUPPORT  
FRAME AND JIFFY STAND  
FRAME, MAIN  
FRAME, REAR

It's a preview. You can download the full file by clicking the link below.

<https://shopservicemanual.com/>

Service Manuals from 2\$