

This Parts Catalog has been prepared to make it easier for you to order parts for your motorcycles. The numbers shown in the illustrations correspond to the numbers in the "INDEX NO." column in the parts lists. Consult the illustrations when ordering parts to make sure that you receive all the required parts. The number in parentheses following the part description is the quantity needed for complete assembly. If there is no number in parentheses, only one is used. Prices of parts in this catalog are published separately.

When ordering parts, the following instructions should be followed carefully.

- Make sure to specify the correct part number for each item. The part numbers appear under the "PART NO." column in the parts lists.
- Orders may be placed via your computer for all parts. Review your system documentation on placing orders electronically. All non-warranty replacement crankcase orders require return of the complete left crankcase half with vehicle identification number (VIN). All non-warranty replacement frame orders require return of the steering neck with vehicle identification number (VIN). Non-compliance will result in a fine. See non-warranty frame and crankcase policy or contact Dealer Services.
- The sale or use of these parts or accessories does not grant the purchaser a license or other right under any Harley-Davidson patent.
- For all 2008 and later painted parts, refer to the Service Section of h-dnet.com which features a listing of painted part numbers, except CVO (Custom Vehicle Operations) models which are located in their own respective catalogs.
- All parts that were added for the new model year will have the entire line shaded on the parts list page. This can be used to identify any new parts that are unique to a specific model, and help distinguish new and previous model year parts.
- Parts marked "**RESTRICTED SALE PART**" are limited edition items and can only be ordered as direct replacements.
- Orientation symbols are used when the illustration is not in the standard "Right-Front" orientation. The symbol is a motorcycle with an arrow in the front indicating the direction of view. The symbol is at the bottom left or right side of the illustration page.
- To request a missing or loose part, simply submit a Return Material Authorization (RMA) claim on h-dnet.com with code "T-part not included with vehicle" for all vehicle missing parts claims. Then place an order for the missing item on your next Parts and Accessories order. Upon filing the RMA claim, your dealership will be credited for the dealer net cost of the part. The Vehicle Identification Number must be included on the RMA claim in order for you to receive credit. This process is to be used for vehicles manufactured at all plants.

To the best knowledge of Harley-Davidson Motor Company, the material contained herein is accurate as of the date this publication was approved for printing. Harley-Davidson Motor Company reserves the right to change specifications, equipment or designs at any time without notice and without incurring obligation.

©2019 H-D.

GENERAL INFORMATION

LOOSE PARTS

The Loose Parts section is located at the back of this parts catalog. This section lists the parts which are shipped unfastened with the vehicles covered in this catalog.

HARDWARE LIST

The Hardware List is located at the back of this parts catalog. This section contains the information for each piece of hardware found in each parts list.

NEW PARTS LIST

The New Parts List is located at the back of this parts catalog. This list serves as a summary of new parts.

NUMERICAL INDEX

The Numerical Index is located at the back of this parts catalog. This index includes all part numbers used in this catalog and the page numbers of where they can be found.

COMPONENT TYPES AND INTRODUCTION DATES

The Component Types and Introduction Dates section is located at the back of this parts catalog. This section contains a list of component part numbers and year of introduction.

COMMON SERVICE PARTS

The Common Service Parts section is located at the back of this parts catalog. This section contains the most commonly ordered parts for service on vehicles covered in this catalog. These parts are ordered through the normal ordering process.

SIP (SERVICE INFORMATION PORTAL)

For the latest updates to these manuals, see the Service Information Portal.

VEHICLE IDENTIFICATION NUMBER

See Figure 1. A unique 17-digit serial, or vehicle identification number (VIN), is assigned to each motorcycle. For a description of each digit in the vehicle identification number (VIN), refer to Table 1.

For all models except V-Rod the full 17-digit serial, or vehicle identification number (VIN), is stamped on the right side of the frame backbone at the rear of the steering head. The vehicle identification number (VIN) is also printed on a label on the right front downtube. An abbreviated vehicle identification number (VIN) is stamped on the left side crankcase between the front and rear cylinders.

For V-Rod models only the full 17-digit serial, or vehicle identification number (VIN), is stamped on the right side of the steering head. The vehicle identification number (VIN) is also printed on a label on the left frame tube above the front engine cylinder. An abbreviated vehicle identification number (VIN) is stamped on the left side crankcase below the rear cylinder head.

Always give the full 17-digit vehicle identification number (VIN) when ordering parts or making any inquiry about your motorcycle.

2020 TRIKE MODELS

VIN Model Codes

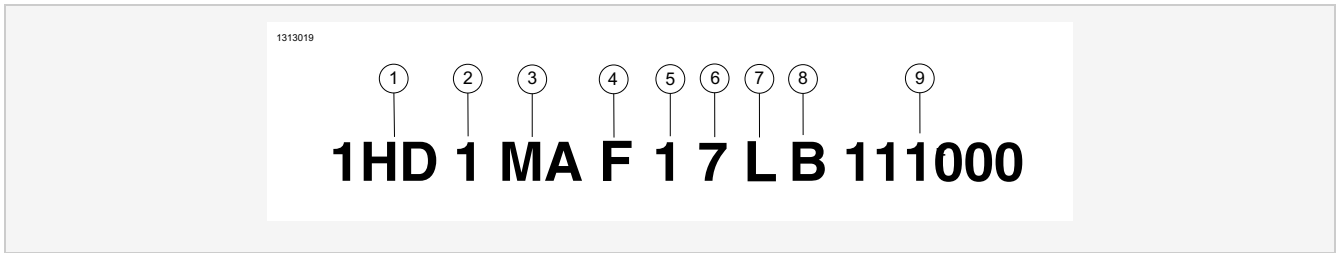


Figure 4. Typical Harley-Davidson VIN

Table 1. Harley-Davidson VIN Breakdown

POSITION	DESCRIPTION	POSSIBLE VALUES
1	World manufacturer identifier	1HD=Originally manufactured in the United States 5HD=Originally manufactured in the United States for sale outside of the United States 932=Originally manufactured in Brazil MEG=Originally manufactured in India MLY=Originally manufactured in Thailand
2	Motorcycle type	1=Heavyweight motorcycle (901 cm ³ or larger)
3	Model	See VIN model table
4	Engine type	F=Twin-Cooled™ Milwaukee-Eight™ 114 Engine, 1868 cm ³ P=Milwaukee-Eight™ 114 Engine, 1868 cm ³
5	Calibration/configuration, introduction	1=Domestic (DOM) 2=California (CAL) 3=Canada (CAN) 4=HDI 5=Japan (JPN) 6=Australia (AUS) 7=Brazil (BRZ) 8=Asia Pacific (APC) 9=India (IND) 0=ASEAN (AZN) A=China (CHN)
6	VIN check digit	Can be 0-9 or X
7	Model year	L=2020
8	Assembly plant	B=York, PA U.S.A. D=H-D Brazil-Manaus, Brazil (CKD) N=Haryana India (Bawal District Rewari) S=Tasit, Pluagdang, Rayong, Thailand
9	Sequential number	Varies

Table 2. VIN Model Codes

CODE	MODEL	CODE	MODEL
MA	FLHTCUTG Tri Glide® Ultra	MC	FLRT Freewheeler

AIR CLEANER
 AIR CLEANER COVER
 AIR DEFLECTORS
 AIR FILTER, ENGINE
 ALTERNATOR AND REGULATOR
 ANTENNA - FLHTCUTG
 AUXILIARY/FOG LAMPS - FLHTCUTG (DOMESTIC, AUSTRALIA)
 AUXILIARY/FOG LAMPS - FLHTCUTG (HDI, ENGLAND)
 AUXILIARY/FOG LAMPS - FLRT (HDI, ENGLAND)
 AXLE ASSEMBLY, REAR
 AXLE, FRONT
 BALANCER ASSEMBLY
 BATTERY
 BATTERY CABLES
 BEARING HOUSING, TRANSMISSION
 BELT, CHAIN AND SPROCKETS
 BELT, REAR
 BODY ASSEMBLY AND SIDE COVERS - FLHTCUTG
 BODY ASSEMBLY AND SIDE COVERS - FLRT (1 OF 2)
 BODY ASSEMBLY AND SIDE COVERS - FLRT (2 OF 2)
 BODY CONTROL MODULE (BCM)
 BRAKE CALIPER, FRONT
 BRAKE CALIPER, REAR
 BRAKE CONTROL, FRONT
 BRAKE CONTROL, REAR
 BRAKE DISC, FRONT
 BRAKE DISC, REAR
 BRAKE LEVER, FRONT
 BRAKE LEVER, REAR
 BRAKE LINE, PARKING BRAKE
 BRAKE LINES AND MODULE, REAR - ABS
 BRAKE LINES, FRONT - ABS
 BRAKE MASTER CYLINDER, FRONT
 BRAKE ROTOR, REAR
 BULB, FRONT TURN SIGNAL - FLHTCUTG (DOMESTIC, AUSTRALIA)
 BULB, FRONT TURN SIGNAL - FLRT (AUSTRALIA)
 BULB, FRONT TURN SIGNAL - FLRT (DOMESTIC)
 BULB, LICENSE PLATE - FLHTCUTG
 BULB, REAR TURN SIGNALS - FLHTCUTG (Domestic)
 BULB, REAR TURN SIGNALS - FLRT (Domestic)
 CALIPER, FRONT BRAKE
 CALIPER, REAR BRAKE
 CAMSHAFT AND CAMSHAFT COVER
 CAMSHAFT SUPPORT ASSEMBLY
 CHAIN, PRIMARY
 CHECK VALVE, OIL PRESSURE
 CLUTCH
 CLUTCH CONTROL
 CLUTCH CONTROL HAND LEVER
 CLUTCH LINE
 CONNECTING ROD
 CONSOLE, FUEL TANK - FLHTCUTG
 CONSOLE, FUEL TANK - FLRT
 COOLANT DISTRIBUTION, AIR-COOLED
 COOLANT DISTRIBUTION, TWIN-COOLED™
 COOLANT HOSES, RADIATOR - TWIN COOLED
 COOLANT, PUMP - TWIN-COOLED™
 COOLING SYSTEM, ENGINE, AIR-COOLED
 COOLING SYSTEM, ENGINE, TWIN-COOLED™
 COVER, PUSHRODS
 COVERS AND AIR DEFLECTORS

CRANKCASE
CRANKCASE BEARINGS
CRANKSHAFT
CYLINDER HEADS
CYLINDERS, HEADS AND VALVES
DAMPER, STEERING - FLHTCUTG
DAMPER, STEERING - FLRT
DIFFERENTIAL ASSEMBLY
DIPSTICK, ENGINE OIL
DIPSTICK, TRANSMISSION
ELECTRONIC CONTROL MODULE (ECM) AND COIL
ELECTRONIC IGNITION SYSTEM
ENGINE ASSEMBLY - Milwaukee-Eight® 114 engine
ENGINE MOUNTS AND STABILIZER LINK
ENGINE SENSORS AND SWITCHES
EVAPORATIVE EMISSIONS COMPONENTS
EXHAUST SYSTEM
FAIRING LOWERS - TWIN-COOLED™ - FLHTCUTG (1 OF 2)
FAIRING LOWERS - TWIN-COOLED™ - FLHTCUTG (2 OF 2)
FAIRING, INNER - FLHTCUTG (1 OF 2)
FAIRING, INNER - FLHTCUTG (2 OF 2)
FAIRING, OUTER - FLHTCUTG
FAN, OIL COOLER - AIR-COOLED
FENDERS, FRONT
FENDERS, REAR - FLHTCUTG
FENDERS, REAR - FLRT
FILTER, AIR
FILTER, FUEL - FLHTCUTG
FILTER, FUEL - FLRT
FILTER, OIL
FLYWHEEL
FOG LAMPS - FLHTCUTG (DOMESTIC, AUSTRALIA)
FOG LAMPS - FLHTCUTG (HDI, ENGLAND)
FOG LAMPS - FLRT (HDI, ENGLAND)
FOOTBOARDS
FORK BRACKETS, FRONT
FORK LOCK
FORK, FRONT
FORK, REAR
FRAME, FRONT
FRAME, INTERMEDIATE AND FORK, REAR
FRAME, MAIN
FRAME, REAR
FRONT FORK
FUEL CAP - FLHTCUTG
FUEL CAP - FLRT
FUEL FILTER - FLHTCUTG
FUEL FILTER - FLRT
FUEL GAUGE - FLHTCUTG
FUEL GAUGE - FLRT
FUEL INJECTOR
FUEL LEVEL SENDER - FLHTCUTG
FUEL LEVEL SENDER - FLRT
FUEL PUMP - FLHTCUTG
FUEL PUMP - FLRT
FUEL TANK - FLHTCUTG
FUEL TANK - FLRT
FUEL TANK TRIM - FLHTCUTG
FUEL TANK TRIM - FLRT
FUSES - FLHTCUTG
FUSES - FLRT
GAUGE, FUEL - FLHTCUTG
GAUGE, FUEL - FLRT
GAUGE, VOLTMETER - FLHTCUTG
GEARS, TRANSMISSION
GRIPS, HANDLEBAR
GUARD, ENGINE
HANDLEBAR

It's a preview. You can download the full file by clicking the link below.

<https://shopservicemanual.com/>

Service Manuals from 2\$