

# MAXXFARM 40 & 50

Preliminary Service Manual

May 2009

47673550

NB: For Maxxfarm 40 & 50 refer to the R41 & R47 models listed in this manual



## HOW TO USE THIS MANUAL

Following is a brief summary of the system used in compiling this service manual.

1. The sections of the manual and their contents are listed in the index furnished at the beginning of the manual. The contents of each section are listed in the index furnished at the beginning of the section.
2. The parts read in the texts or shown in the disassembled views are numbered in the disassembly sequence.
3. What to be inspected for during disassembly are indicated in  in the disassembled views.
4. The maintenance standards or specifications to be referred to for inspection and repair are indicated in easy-to-refer passages of the texts and also in Section 11 in a tabulated form.
5. The following symbols are used in this manual to emphasize important and critical instructions:

**NOTE** ..... Indicates a condition that is essential to highlight.

**⚠ CAUTION** ..... Indicates a condition that can cause engine damage.

**⚠ WARNING** ..... Indicates a condition that can cause personal injury or death.

6. The following terms are used in the dimensional and other specifications:

Nominal size ..... Is the named size which has no specified limits of accuracy.

Assembly standard .... Is the dimension of a part to be attained at the time of assembly, or the standard performance. Its value is rounded to the nearest whole number needed for inspection and is different from the design value.

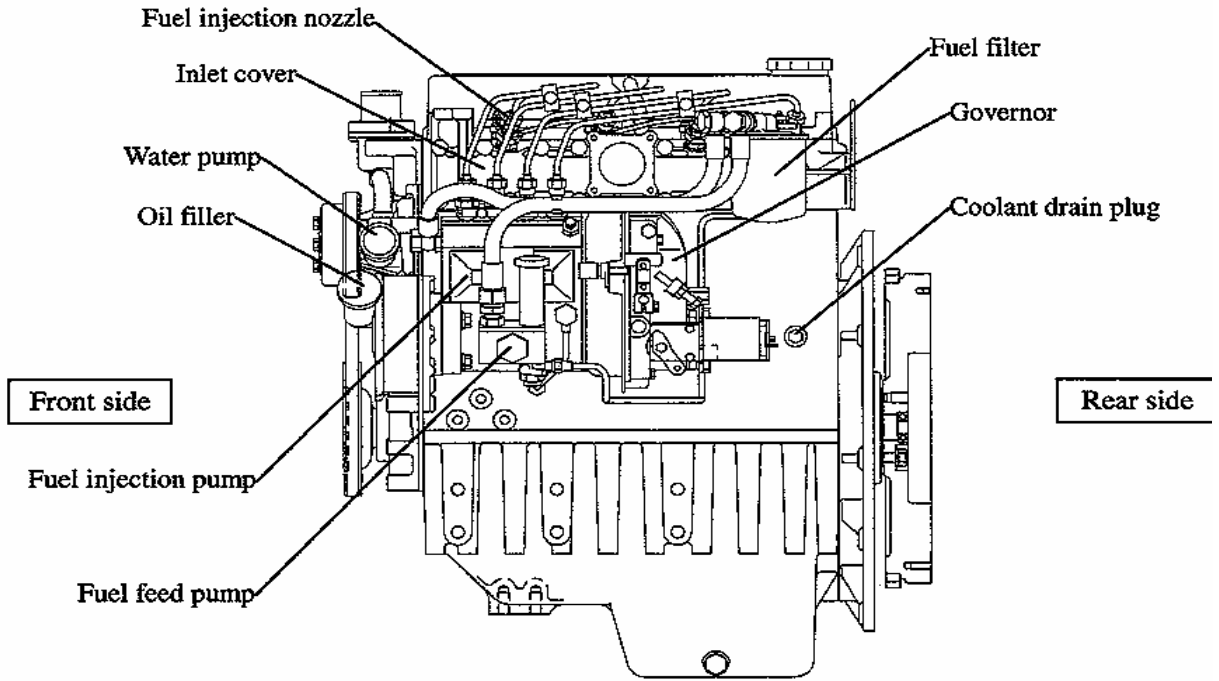
Standard clearance .... Is the clearance to be obtained between mating parts at the time of assembly.

Repair limit ..... Is the maximum or minimum dimension specified for a part. A part which has reached this limit must be repaired.

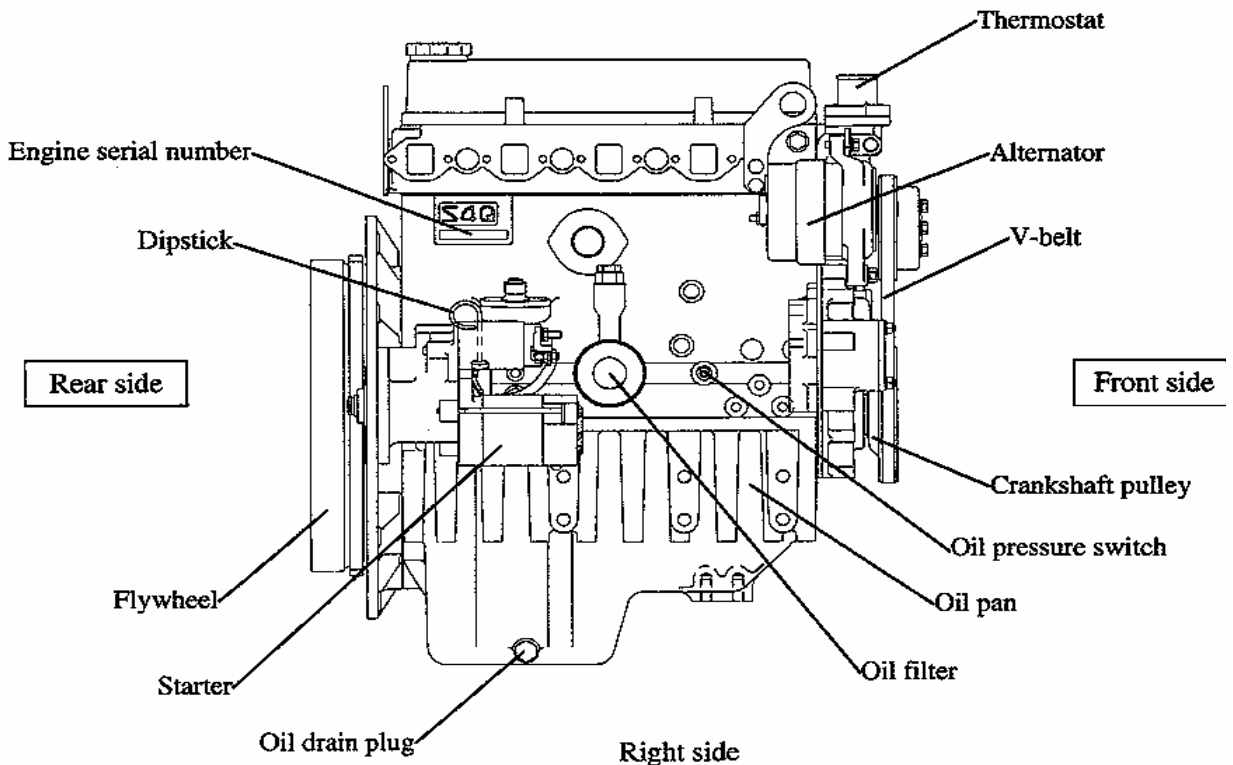
Service limit ..... Is the maximum or minimum dimension specified for a part. A part which has reached this limit must be replaced.

# 1. GENERAL

## 1.1 Typical engine arrangements



Left side

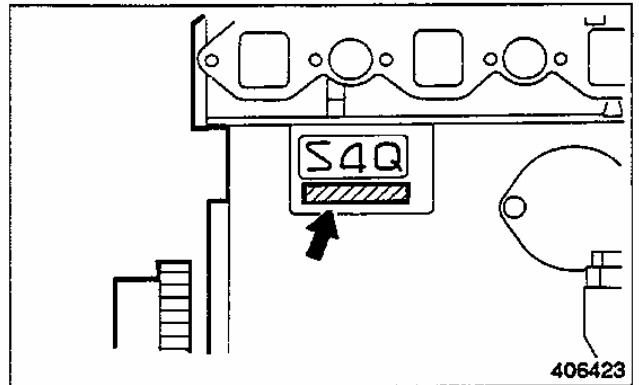


Right side

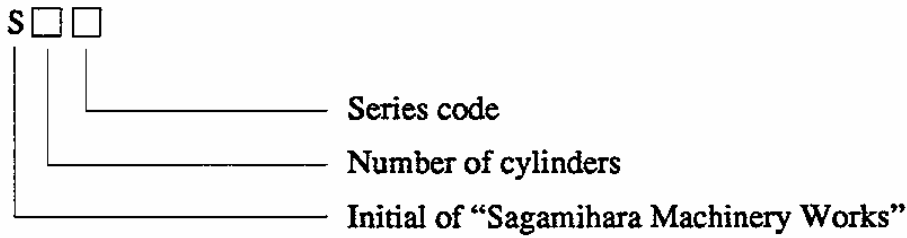
**NOTE:** Rotation of crankshaft is counterclockwise when seen from flywheel end.  
NB: For maximum 40 & 50 refer to the R41 & R47 models listed in this manual

### 1.2 Engine serial number location

The engine serial number is located on the side of the crankcase.



### 1.3 Engine model designation



# GENERAL INFORMATION

## 2.SPECIFICATIONS

Engine model		S4Q-Y161GT	S4Q2-Y161GT
General	Type	In-line, water-cooled, 4-stroke cycle	
	Firing order	1-3-4-2	
	Compression ratio	22	
	Combustion chamber, type	Swirl	
	Weight(dry),kg(lb)	245(540)	
	Number of cylinders	4	
	bore x stroke,mm(in.)	88 x 95(3.46 x 3.74)	88 x 103(3.46 x 4.06)
	Displacement,liter(cu in.)	2.311(141)	2.505(153)
Maximum permissible working angles for oil pickup level in oil pan, longitudinal and lateral		30°	
Fuel system	Injection pump type	Bosch A	
	Injection nozzle, type	Bosch throttle	
	Fuel filter, type	Spin-on	
Lubrication system	Type	force feed	
	Oil filter, type	Spin-on cartridge of paper-element	
	Capacity, liter(U.S.gal.)	Oil pan:7(1.8), approx. Crankcase:8(2.1), approx.	
Cooling system	Type	Radiator	
	Capacity(water jacket), liter(U.S.gal.)	3.7(0.98)	
Electrical system	Starter, V – kW	12 – 2.2	
	Alternator, V – A	12 – 50	
	Battery recommended, V – Ah	12 – 80D26R	

NB: For Maxxfarm 40 & 50 refer to the R41 & R47 models listed in this manual

It's a preview. You can download the full file by clicking the link below.

<https://shopservicemanual.com/>

Service Manuals from 2\$