



SOFTAIL® MODELS

2010 HARLEY-DAVIDSON® PARTS CATALOG

READER COMMENTS

The Harley-Davidson Service Communications Department maintains a continuous effort to improve the quality and usefulness of its publications. To do this effectively, we need user feedback — your critical evaluation of this manual.

Please comment on the completeness, accuracy, organization, usability, and readability of this manual.

Please list the page, item, and part number(s) of any errors you find in this manual.

Please tell us how we can improve this manual.

Occupation:

Name:

Dealership:

Street:

Department:

City:

State:

Zip:

2010 Softail Models Parts Catalog (99455-10)

Please clip out and mail to:
Service Communications Department
Harley-Davidson Motor Company
P.O. Box 653
Milwaukee, WI USA 53201

CMI-.5M-08/09

Cut Here

Cut Here

PLEASE ADD ANY OTHER COMMENTS HERE

GENERAL INFORMATION

2010 SOFTAIL MODELS PARTS CATALOG

THIS IS NOT AN ASSEMBLY MANUAL AND SHOULD NOT BE USED AS SUCH

About This Manual

This Parts Catalog has been prepared to make it easier for you to order parts for the 2010 Softail model motorcycles. You will also find a complete Hardware Listing at the back of the book for your convenience. The numbers shown in the illustrations correspond to the numbers in the "INDEX NO." column in the parts lists. Consult the illustrations when ordering parts to make sure you receive all the required parts. Take note that the number in parenthesis following the part description is the quantity of that part needed for complete assembly; if there is no number in parenthesis, only one is used. Prices of parts in this catalog are published separately.

The following instructions should be followed carefully when ordering parts:

- The "MODELS" column in the parts lists may include one or more two-character codes that correspond to the V.I.N. model designations. The Softail models and their respective two-character codes are listed at the bottom of each right-hand page for your reference. If a part fits all Softail models, "All" will be in the corresponding "MODEL" column.
- Be sure to specify the correct part number for each item. The part numbers appear under the "PART NO." column in the parts lists.
- Orders may be placed via your computer for all parts. Review your system documentation for details on placing orders electronically. All non-warranty replacement crankcase orders require return of the complete left crankcase half with V.I.N.. All non-warranty replacement frame orders require return of the steering neck with V.I.N.. Non-compliance will result in a fine. See non-warranty frame and crankcase policy or contact your SPOC team for details.
- The sale or use of these parts or accessories does not grant the purchaser a license or other right under any Harley-Davidson patent.
- For all 2008 and later painted parts refer to the Service Section of h-dnet.com which features a listing of painted part numbers for all Harley-Davidson motorcycles.
- All parts that were added for the new model year will have a vertical bar located on the parts list page to the left of the index number. This can be used to quickly identify any new parts that are unique to a specific model, and help distinguish new and previous model year parts. In the back of the book you will find a New Parts List. This list will serve as a summary of new parts. If the parts catalog is a revised edition, only parts added to the catalog revision will be marked with the marker bar or added to the New Parts List summary.

To the best knowledge of Harley-Davidson Motor Company, the material contained herein is accurate as of the date this publication was approved for printing. Harley-Davidson Motor Company reserves the right to change specifications, equipment, or designs at any time without notice and without incurring obligation.

Vehicle Identification Number (V.I.N.)

See Figure 1 on the next page. The full 17-digit serial, or V.I.N., is stamped on the right side of the frame backbone at the rear of the steering head. The V.I.N. is printed on a label on the right side of the down tube.

An abbreviated V.I.N. is stamped on the left side crankcase between the front and rear cylinders.

Sample V.I.N. as it appears on the steering head - **1HD1BW513AB110000**

Sample abbreviated V.I.N. as it appears on the left crankcase - **BW5A110000**

Always give the full 17-digit V.I.N. when ordering parts or making any inquiry about your motorcycle.

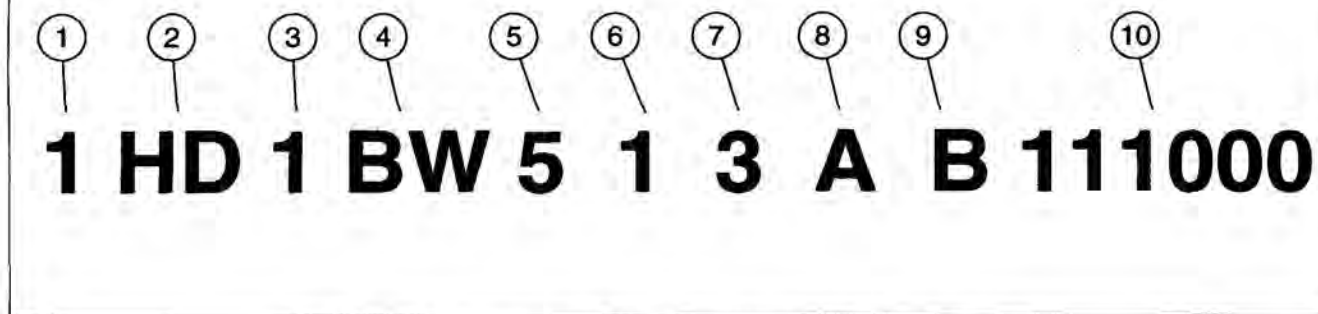


Figure 1. Typical Harley-Davidson V.I.N.: 2010 Softail Models

Table 1. Harley-Davidson V.I.N. Breakdown: 2010 Softail Models

POSITION	DESCRIPTION	POSSIBLE VALUES		
1	Market designation	1=Originally manufactured for sale within the United States 5=Originally manufactured for sale outside of the United States		
2	Manufacturer/vehicle type	HD=Harley-Davidson motorcycle		
3	Motorcycle type	1=Heavyweight motorcycle (901 cc and larger)		
4	Model	See V.I.N. model table		
5	Engine type	5=Twin Cam 96B™, 1584 cc air-cooled, fuel-injected, balanced		
6	Introduction date/calibration	<table border="0"> <tr> <td>Normal Introduction 1=Domestic 3=California A=Canada C=HDI E=Japan G=Australia J=Brazil</td> <td>Mid-year or Special Introduction 2, 4=Domestic 5, 6=California B=Canada D=HDI F=Japan H=Australia K=Brazil</td> </tr> </table>	Normal Introduction 1=Domestic 3=California A=Canada C=HDI E=Japan G=Australia J=Brazil	Mid-year or Special Introduction 2, 4=Domestic 5, 6=California B=Canada D=HDI F=Japan H=Australia K=Brazil
Normal Introduction 1=Domestic 3=California A=Canada C=HDI E=Japan G=Australia J=Brazil	Mid-year or Special Introduction 2, 4=Domestic 5, 6=California B=Canada D=HDI F=Japan H=Australia K=Brazil			
7	V.I.N. check digit	Can be 0-9 or X		
8	Model year	A=2010		
9	Assembly plant	B=York, PA U.S.A.		
10	Sequential number	Varies		

Table 2. V.I.N. Model Codes: 2010 Softail Models

CODE	MODEL	CODE	MODEL
BV	FXST Softail® Standard (JPN, AUS markets)	JG	FLSTF Shrine
BW	FLSTC Heritage Softail® Classic	JH	FLSTC Shrine
BX	FLSTF Fat Boy®	JK	FXCWC Softail Rocker™ C
JD	FLSTN Softail® Deluxe	JL	FXSTC Softail Custom™
JE	FLST Heritage Softail® (Brazil only)	JM	FLSTSB Softail® Cross Bones™
		JN	FLSTFB Softail® Fat Boy® Lo (CAL, CAN, DOM, JPN markets) FLSTFB Softail® Fat Boy® Special (HDI, HDE markets)

It's a preview. You can download the full file by clicking the link below.

<https://shopservicemanual.com/>

Service Manuals from 2\$