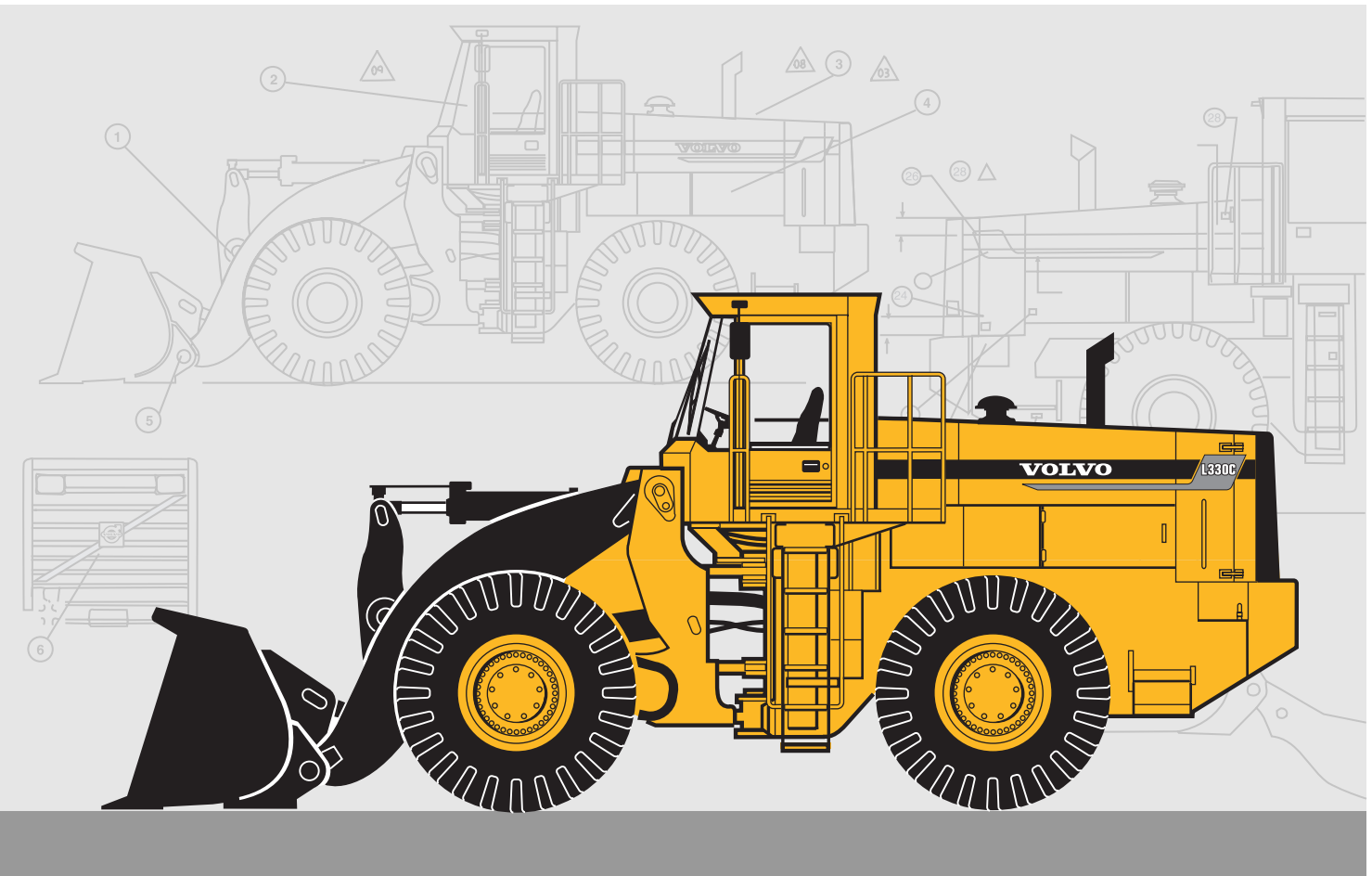


VOLVO WHEEL LOADER

L330C



- **Engine output SAE J1349:**
gross 370 kW (503 hp)
net 366 kW (498 hp)
- **Operating weight:** 46,9–51,6 t
- **Buckets:** 6,1–12,7 m³
- **Volvo high performance low emission engine**, with excellent low rpm performance. The engine meets all known regulations regarding exhaust emission for off-road machines until year 2001

- **Wet disc brakes** – fully sealed, forced oil-cooled, outboard mounted
- **Posi-Torq** limited-slip differentials in front and rear axles
- **Care Cab** – pressurized cab with high comfort and safety
- **Contronic** monitoring system
- **Load-sensing hydraulic system** – working and steering hydraulics

- Pilot-operated working hydraulics

Optional equipment

- Long boom
- Boom Suspension System
- Comfort Drive Control

VOLVO

Document Title: Electric welding	Function Group: 170	Information Type: Service Information	Date: 8/10/2020
Profile:			

Electric welding

Before carrying out electric welding on the machine or attachments connected to the machine, the battery disconnect switch must be turned off or the battery earth lead disconnected.

Connect the welding unit as close as possible to the point of welding.

Document Title: Towing/recovering	Function Group: 100	Information Type: Service Information	Date: 8/10/2020
Profile:			

Towing/recovering

Measures for towing/recovering

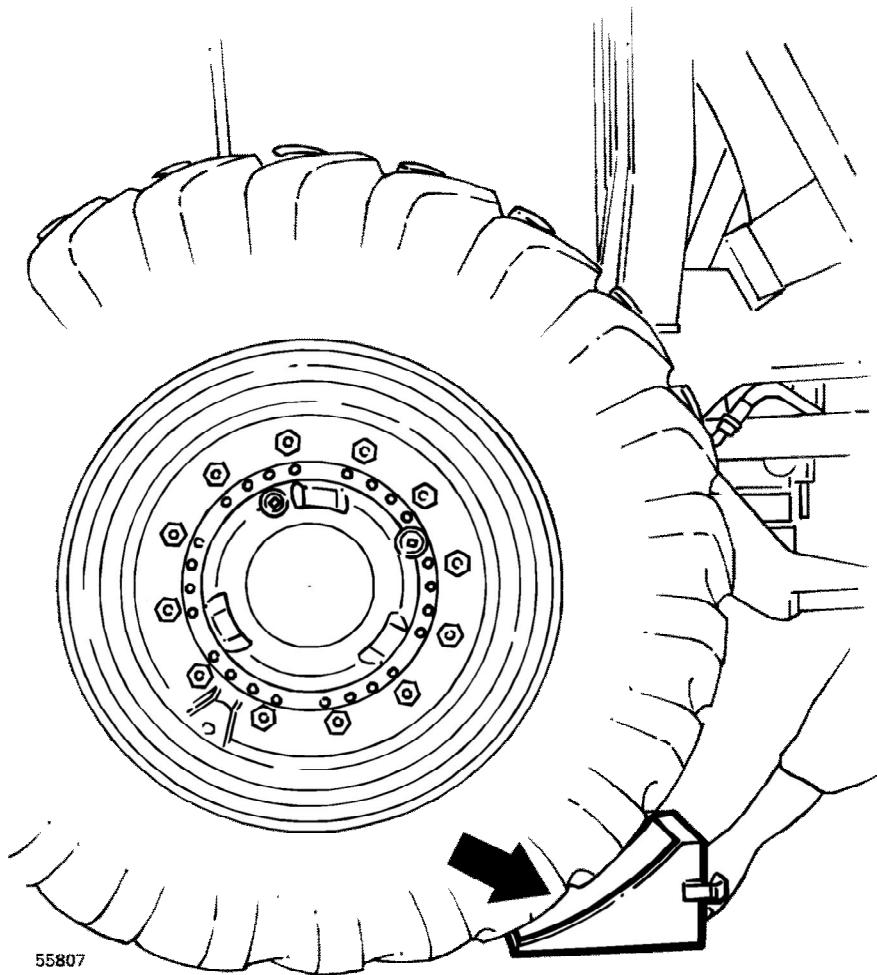
If it is possible, before towing/recovering, the engine should be started so as to be able to operate the brake and steering functions satisfactorily.

When towing the gear selector control should be in the neutral position.

It is not possible to start the engine by towing the machine.

WARNING

Before measures for towing or recovering are initiated, the parking brake must be applied and the wheels blocked in order to prevent the machine from starting to roll. The greatest care must be exercised during work with towing/recovering in order to avoid injuries or at worst, fatalities.



55807

Figure 1
Blocking wheels
RECOVERING

WARNING

If the engine cannot be started:

As the brake and steering functions will be limited in this situation, towing the machine may only be done in an emergency, absolutely the shortest possible distance and under the supervision of personnel trained for this purpose. If possible, transport the machine on a trailer.

Use towbar in order to tow the machine to a suitable place or trafficable road. The towbar should be connected to the towing device according to Fig.

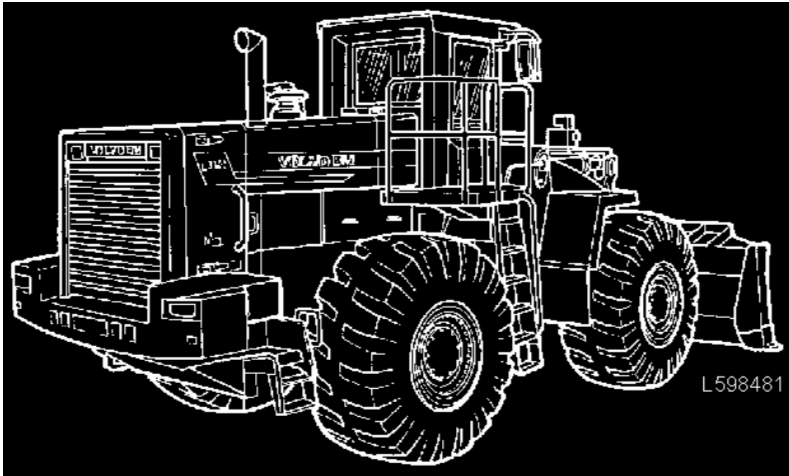


Figure 2
Towing device

CAUTION

The lifting eyes must not be used for recovering.

Document Title: Towing	Function Group: 100	Information Type: Service Information	Date: 8/10/2020
Profile:			

Towing

If the machine, after recovery, must be towed to a workshop, use a towbar connected to the towing device as described above, or a wire rope attached to the towing eyes inside the front axle attachment on the frame

If the brakes do not function (the engine cannot be started), a towbar should always be used.

The towing vehicle must always be at least as heavy as the towed vehicle and have sufficient engine and braking capacity to be able to pull and brake both vehicles on any up or down hill encountered on the way.

The towing distance should always be as short as possible, otherwise the transmission may be damaged.

If the towing distance is longer than 10 km (6 miles) and/or if the speed is higher than 10 km/h (6 mph) both the front and rear propeller shafts must be removed, alternatively, the machine should be transported on a trailer.

After recovering/towing

Before the towbar or wire rope are removed after recovering/towing, the following safety measures should be taken:

- Place the machine on level ground.
- Apply the parking brake.
- Block the wheels in order to prevent the machine from beginning to roll.

It's a preview. You can download the full file by clicking the link below.

<https://shopservicemanual.com/>

Service Manuals from 2\$