

WSM

WORKSHOP MANUAL **TRACTOR**

**M8200DNB(SUPPLEMENT),
M8200SDNB,M8200SDNBC**

Кубота

N M8200DNB (Supplement)
M8200SDNB
M8200SDNBC

CONTENTS

SAFETY INSTRUCTIONS.....	N1
SPECIFICATIONS	N4
DIMENSIONS	N5
 G. GENERAL	NG-1
[1] FEATURES	NG-1
[2] LUBRICANTS, FUEL AND COOLANT	NG-3
[3] MENTENANCE	NG-4
[4] CHECK AND MAINTENANCE	NG-5
[5] SPECIAL TOOL	NG-8
[6] OTHERS	NG-9
[7] IMPLEMENT LIMITATIONS	NG-13
 1. ENGINE.....	N1-S1
[2] SERVICING.....	N1-S1
 2. CLUTCH.....	N2-S1
[2] SERVICING.....	N2-S1
 3. TRANSMISSION	N3-M1
[1] MECHANISM	N3-M1
[2] SERVICING.....	N3-S1
 4. REAR AXLE.....	N4-S1
[2] SERVICING.....	N4-S1
 6. FRONT AXLE.....	N6-M1
[1] MECHANISM	N6-M1
[2] SERVICING.....	N6-S1
 7. STEERING	N7-S1
[2] SERVICING.....	N7-S1
 8. HYDRAULIC SYSTEM.....	N8-M1
[1] MECHANISM	N8-M1
[2] SERVICING.....	N8-S1
 9. ELECTRICAL SYSTEM	N9-M1
[1] MECHANISM	N9-M1
[2] SERVICING.....	N9-S1
 10. CABIN	N10-1

TO THE READER

In this section, the main additional functions and altered points of M8200DNB, M8200SDNB, M8200SDNBC tractors from M6800, M8200, M9000 tractors are explained separately in two items, "Mechanism" and "Servicing" for each section.

As for the items which are not explained in this section, refer to M6800, M8200, M9000 Workshop Manual.

■ Mechanism

Information on the construction and function are included for M8200DNB, M8200SDNB, M8200SDNBC tractors. This part should be understood before proceeding with troubleshooting, disassembling and servicing.

■ Servicing

For M8200DNB, M8200SDNB, M8200SDNBC tractors, there are troubleshooting, servicing specification lists, checking and adjusting, disassembling and assembling, and servicing which cover procedures, precautions, factory specifications and allowable limits.

All information illustrations and specifications contained in this manual are based on the latest product information available at the time of publication.

The right is reserved to make changes in all information at any time without notice.

March 2001

© KUBOTA Corporation 2001

SAFETY DECALS

The following safety decals are installed on the machine.

If a decal becomes damaged, illegible or is not on the machine, replace it. The decal part number is listed in the parts list.

(1) Part No. TA040-4965-2



⚠ DANGER

TO AVOID POSSIBLE INJURY OR DEATH FROM A MACHINE RUNAWAY.

1. Do not start engine by shorting across starter terminals or bypassing the safety start switch. Machine may start in gear and move if normal starting circuitry is bypassed.
2. Start engine only from operator's seat with transmission and PTO OFF. Never start engine while standing on the ground.

(5) Part No. 3A431-9849-2

⚠ WARNING

Never modify or repair a ROPS because welding, drilling, grinding or cutting any portion may weaken the structure.

⚠ DANGER

TO AVOID INJURY WHEN RAISING OR FOLDING ROPS :

- Set parking brake and stop engine.
- Remove any obstruction that may prevent raising or folding of the ROPS.
- Do not allow any bystanders.
- Hold center of ROPS when folding to avoid free-fall.
- Make sure all pins are installed and locked.

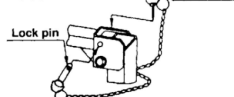
IMPORTANT

UPRIGHT POSITION Lynch pin.



Secure both lock pins with lynch pins.

FOLDED POSITION Lynch pin.



Secure both lock pins with lynch pins.

(2) Part No. TA040-4958-1

Do not touch hot surface like muffler, etc.



(3) Part No. TA040-4957-1

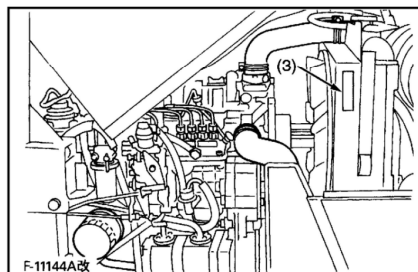
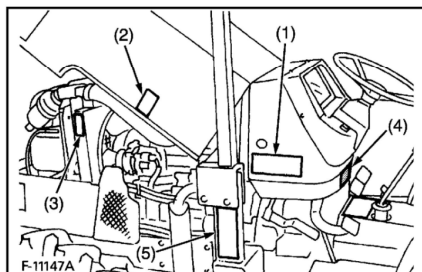
Stay clear of engine fan and fanbelt.



(4) Part No. 35080-6528-2

⚠ CAUTION

Pull the engine stop knob back and hold it until the engine stops in case of emergency.



T12730ZZ00101

It's a preview. You can download the full file by clicking the link below.

<https://shopservicemanual.com/>

Service Manuals from 2\$